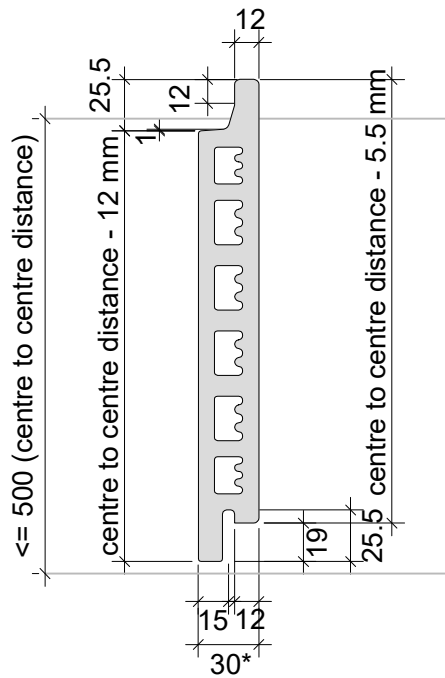
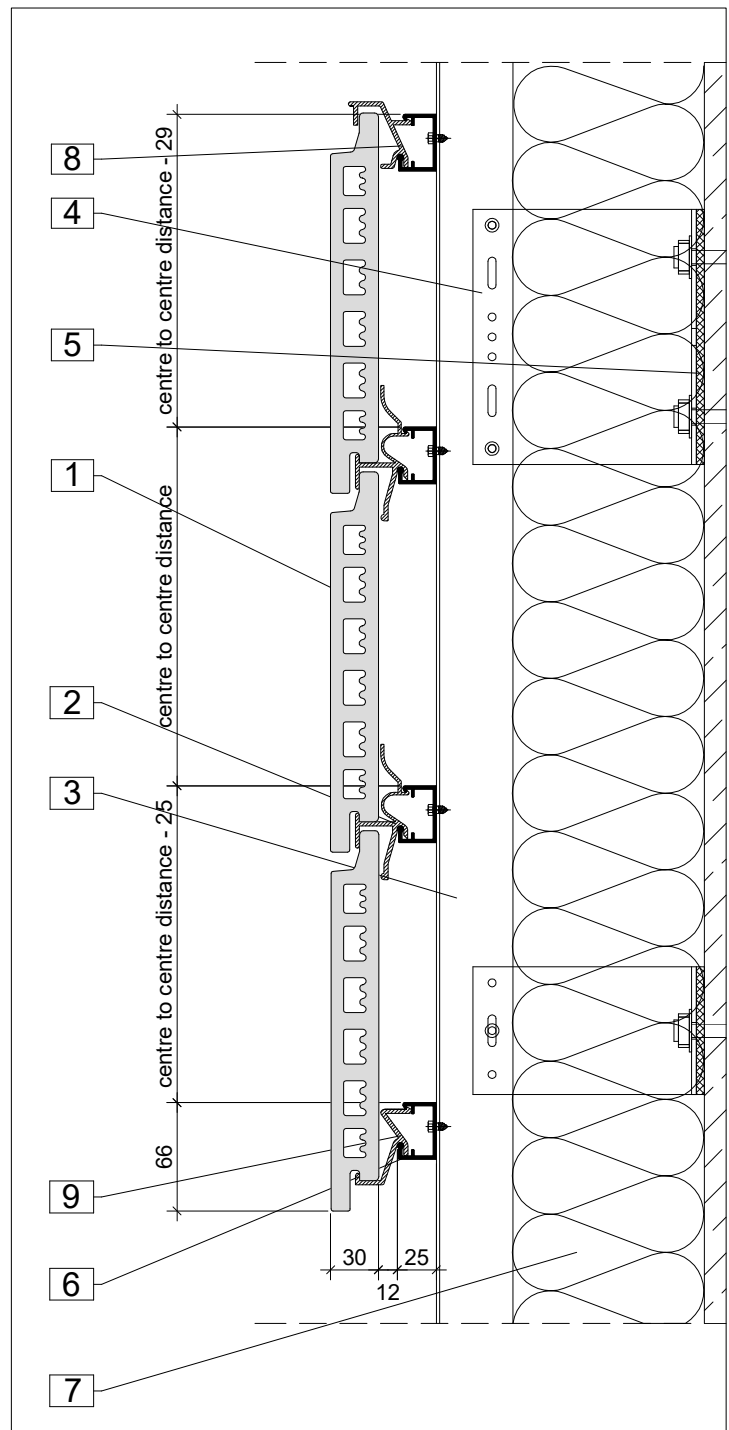
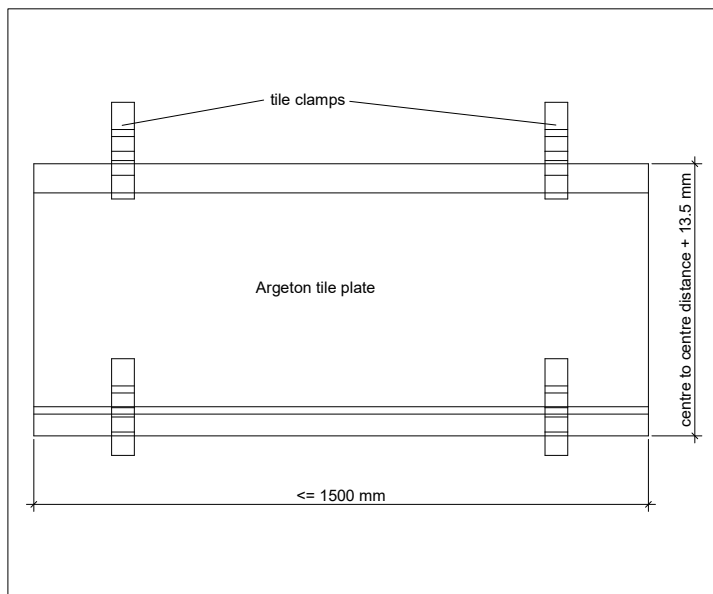


Dimensions of the system

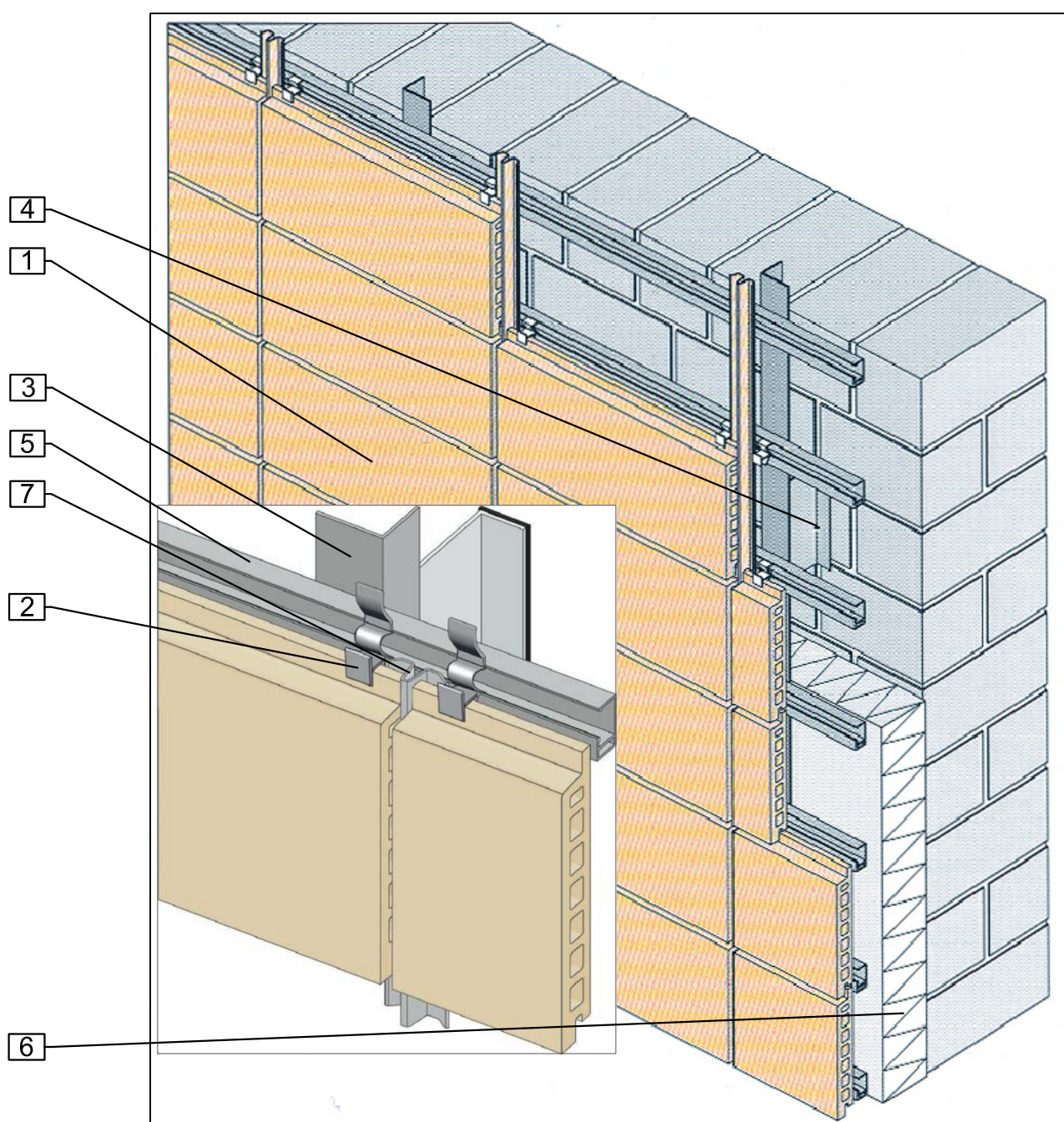
02 / 2020



* tile height > 400mm:
tile thickness = 35mm



- | | |
|--------------------------------|---------------------------------------|
| 1. Argeton tile plate | 6. Aluminium carrier rail, horizontal |
| 2. Middle clamp | 7. Insulation |
| 3. Aluminium profile, vertical | 8. Top clamp |
| 4. Aluminium cleat | 9. Bottom clamp |
| 5. Thermal separation | |



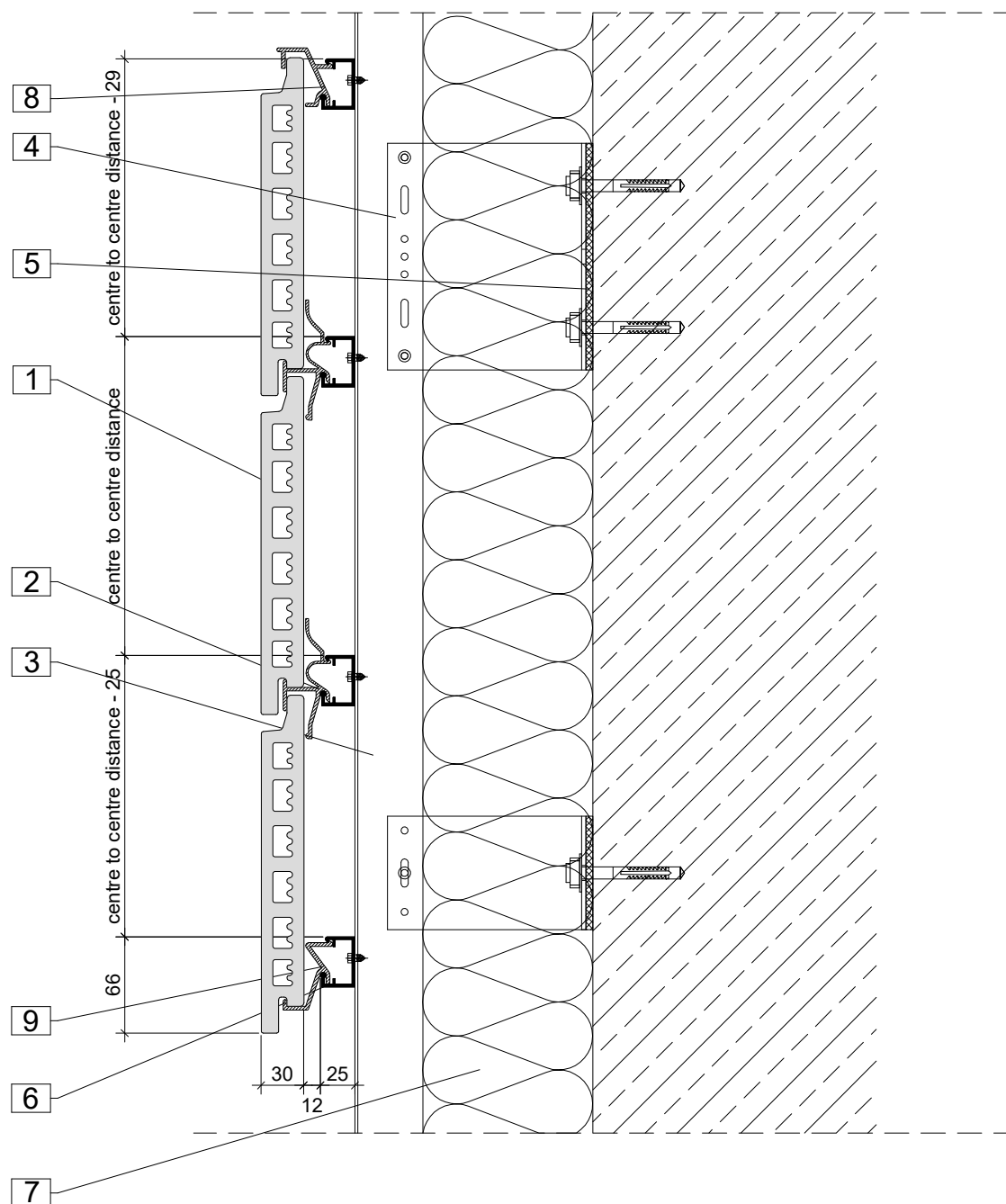
1. Argeton tile plate
2. Middle clamp
3. Aluminium profile, vertical
4. Aluminium cleat

5. Aluminium carrier rail, horizontal
6. Insulation
7. Junction profile

H-UK_10	Normal section
H-UK_11.1	Building corner with mitred corner
H-UK_11.2	Building corner with mitred corner (and corner profile)
H-UK_11.3	Building corner with corner profile (closed)
H-UK_11.4	Building corner with corner profile (open)
H-UK_11.5	Building corner with corner profile (half-round)
H-UK_11.6.1	Building corner Argeton / plaster (with mitred tile plate)
H-UK_11.6.2	Building corner Argeton / plaster (with canted sheet)
H-UK_11.6.3	Building corner Argeton / plaster (with canted sheet)
H-UK_11.7.1	Encompassing building corner with corner profile (half-round)
H-UK_11.7.2	Encompassing building corner with mitred tile plates
H-UK_12.1	Internal corner Argeton facade / plaster
H-UK_12.2	Internal corner with squared up tile plates
H-UK_13.1	Reveal section with sheet
H-UK_13.2	Reveal section with mitred tile plates

Horizontal substructure	
Vertical facade cross sections	
	02 / 2020

H-UK_01	Assembly schedule
H-UK_02	Fixing point
H-UK_03	Sliding point
H-UK_04	Bottom junction
H-UK_05	Top junction
H-UK_06	Sill section
H-UK_07.1	Lintel section with sheet
H-UK_07.2.1	Lintel section with anti-glare shield - option 1
H-UK_07.2.2	Lintel section with anti-glare shield - option 2
H-UK_07.3	Lintel section with Argeton tile plate
H-UK_08	Intersection Argeton facade / plaster
H-UK_09	Intersection Argeton facade / Argeton ceiling

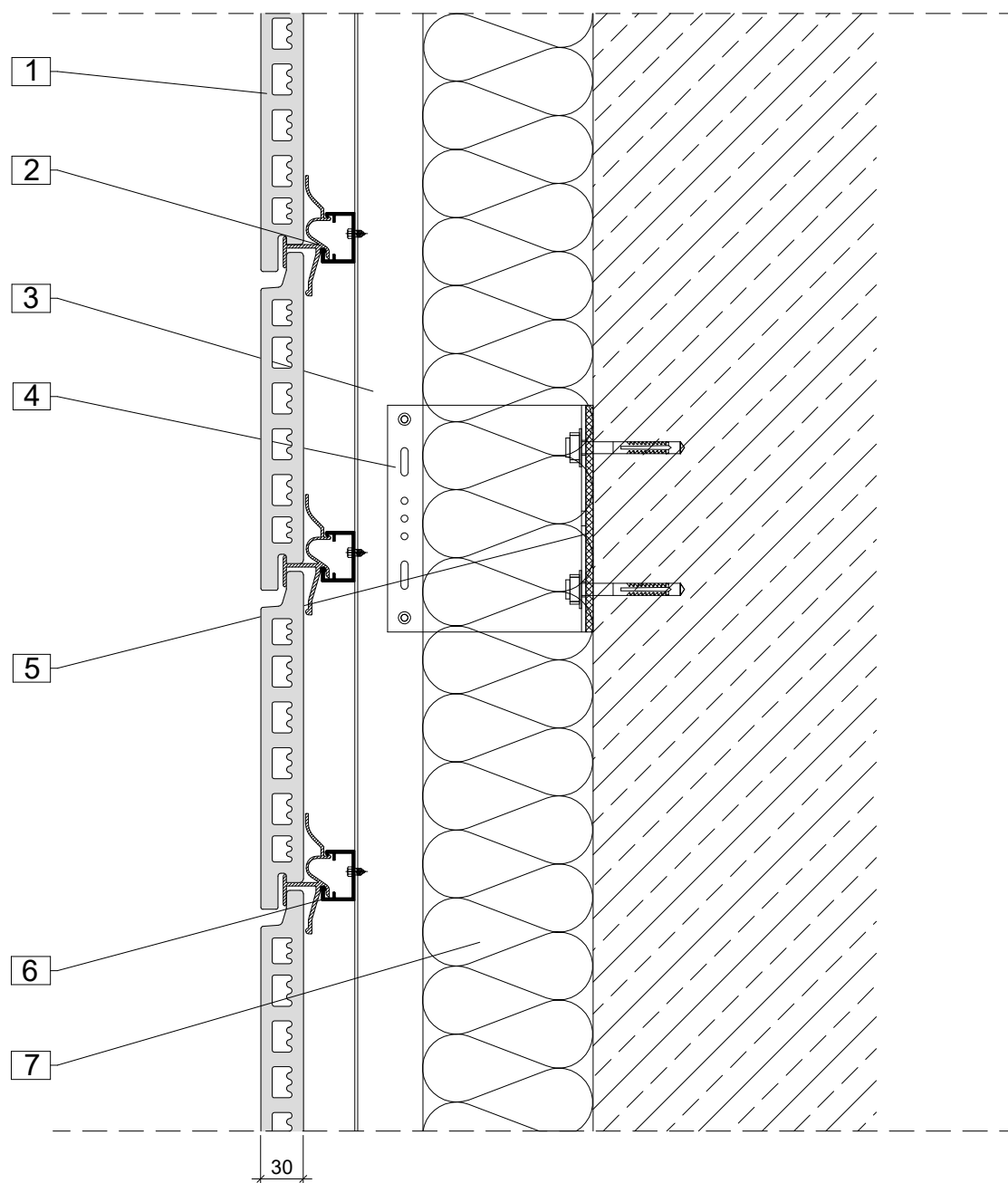


1. Argeton tile plate
2. Middle clamp
3. Aluminium profile, vertical
4. Aluminium cleat
5. Thermal separation

6. Aluminium carrier rail, horizontal
7. Insulation
8. Top clamp
9. Bottom clamp

Notes

The details shown are simplified technical suggestions. The planning and realisation of the facade design are carried out building-specifically and in particular cases are to be adapted to the country building codes and guidelines.

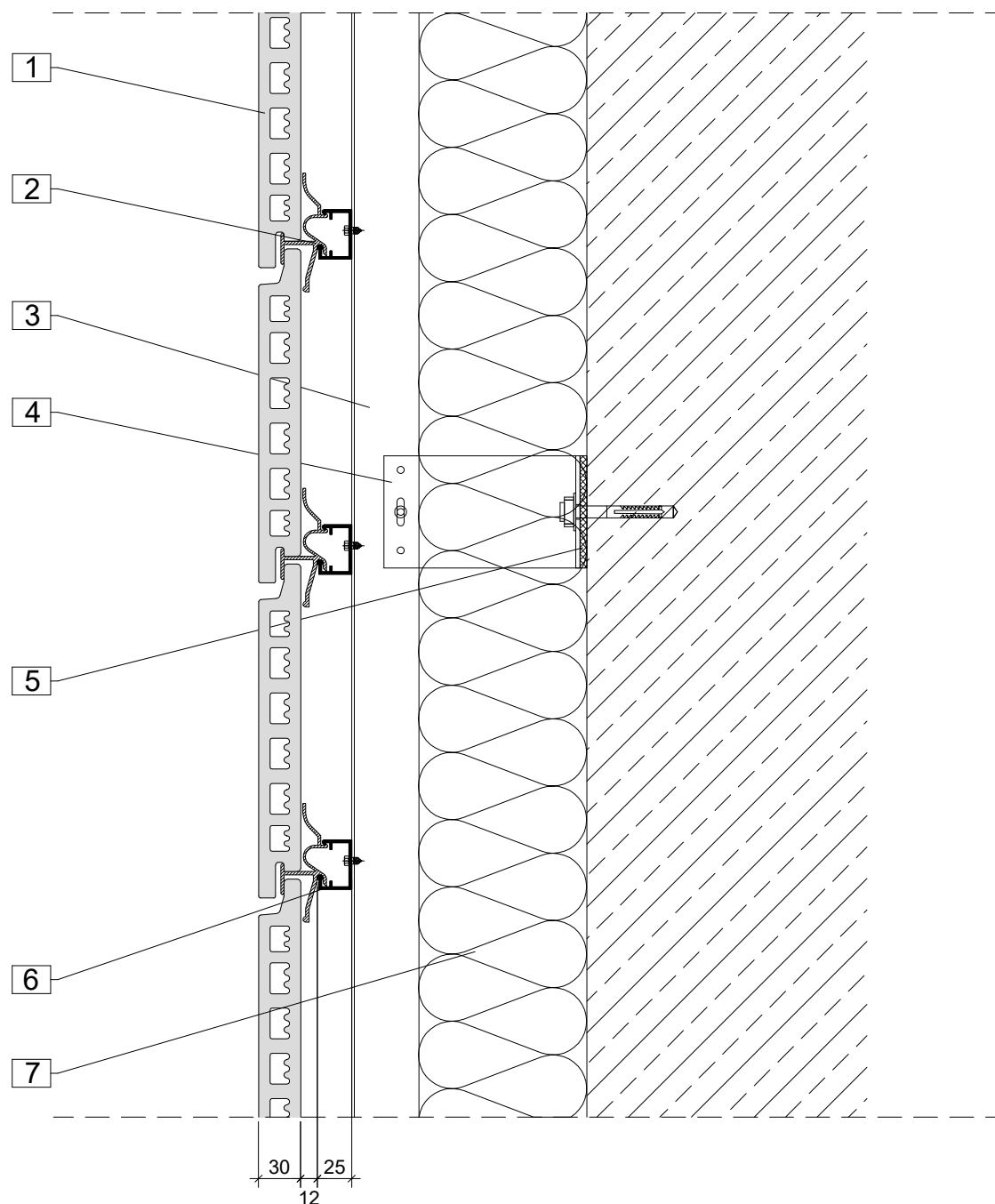


1. Argeton tile plate
2. Middle clamp
3. Aluminium profile, vertical
4. Aluminium cleat
5. Thermal separation

6. Aluminium carrier rail, horizontal
7. Insulation

Notes

The details shown are simplified technical suggestions. The planning and realisation of the facade design are carried out building-specifically and in particular cases are to be adapted to the country building codes and guidelines.

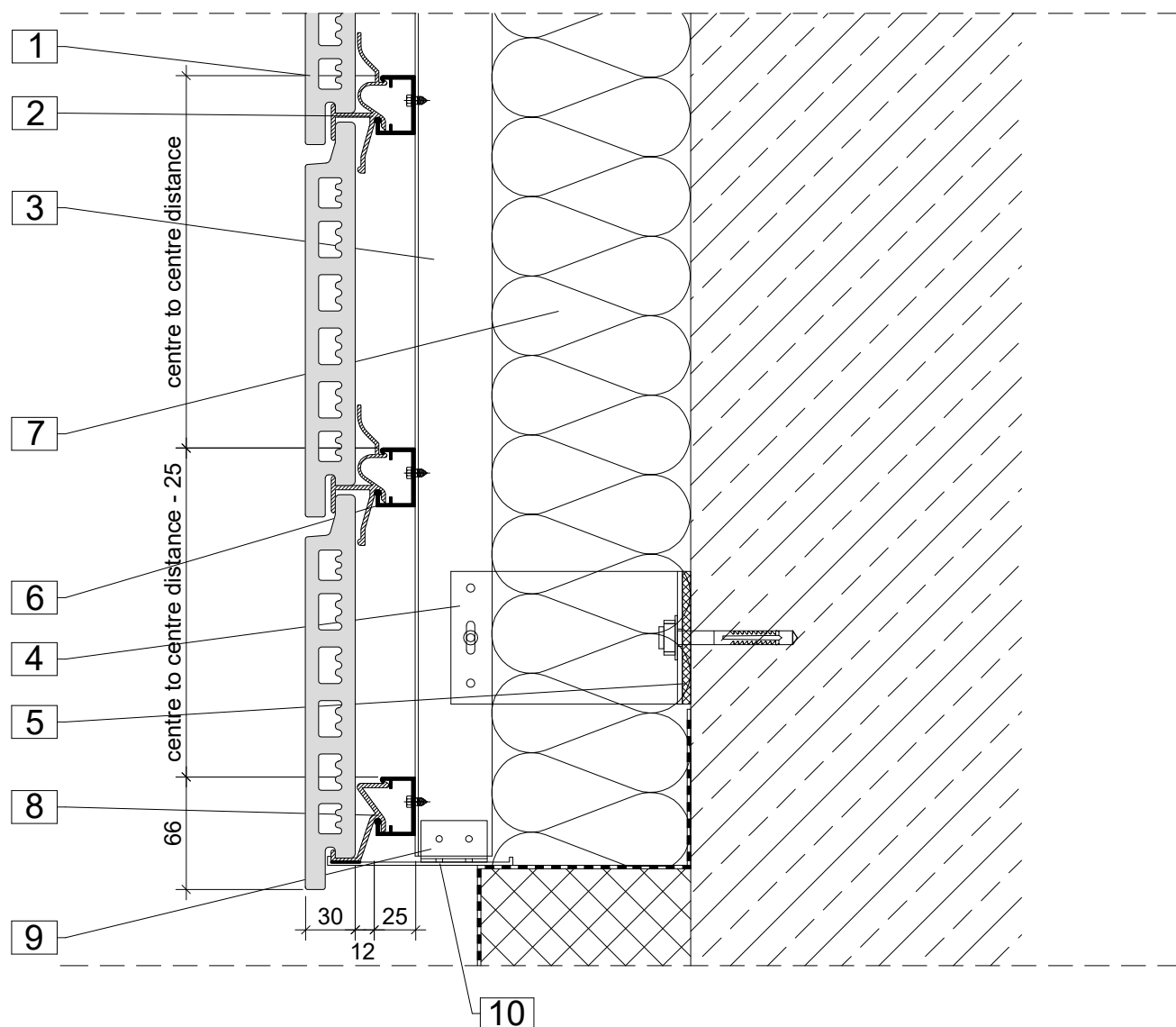


1. Argeton tile plate
2. Middle clamp
3. Aluminium profile, vertical
4. Aluminium cleat
5. Thermal separation

6. Aluminium carrier rail, horizontal
7. Insulation

Notes

The details shown are simplified technical suggestions. The planning and realisation of the facade design are carried out building-specifically and in particular cases are to be adapted to the country building codes and guidelines.

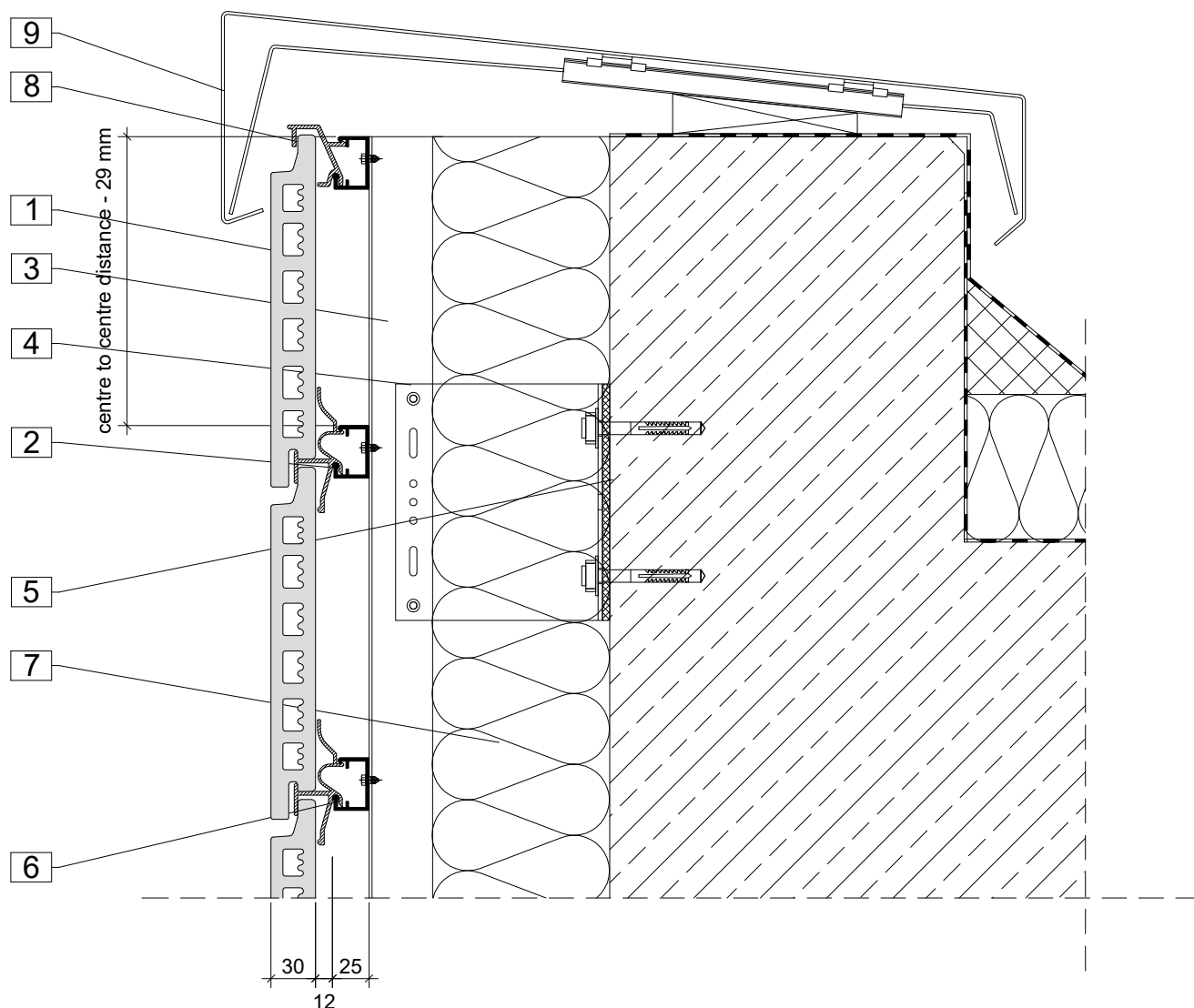


1. Argeton tile plate
2. Middle clamp
3. Aluminium profile, vertical
4. Aluminium cleat
5. Thermal separation

6. Aluminium carrier rail, horizontal
7. Insulation
8. Bottom clamp
9. Fastening angle
10. Perforated sheet

Notes

The details shown are simplified technical suggestions. The planning and realisation of the facade design are carried out building-specifically and in particular cases are to be adapted to the country building codes and guidelines.

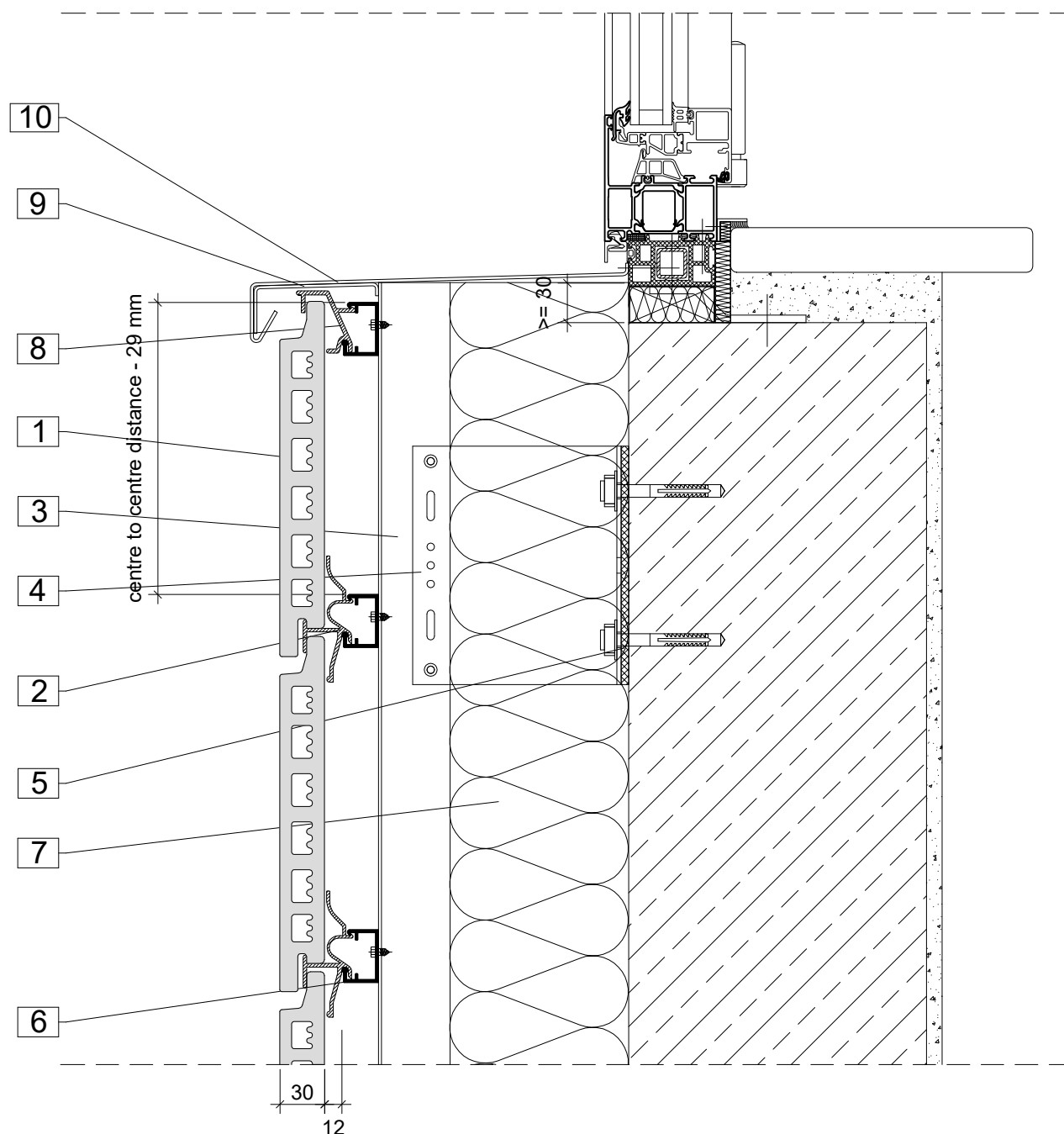


1. Argeton tile plate
2. Middle clamp
3. Aluminium profile, vertical
4. Aluminium cleat
5. Thermal separation

6. Aluminium carrier rail, horizontal
7. Insulation
8. Top clamp
9. Parapet sheet, canted

Notes

The details shown are simplified technical suggestions. The planning and realisation of the facade design are carried out building-specifically and in particular cases are to be adapted to the country building codes and guidelines.

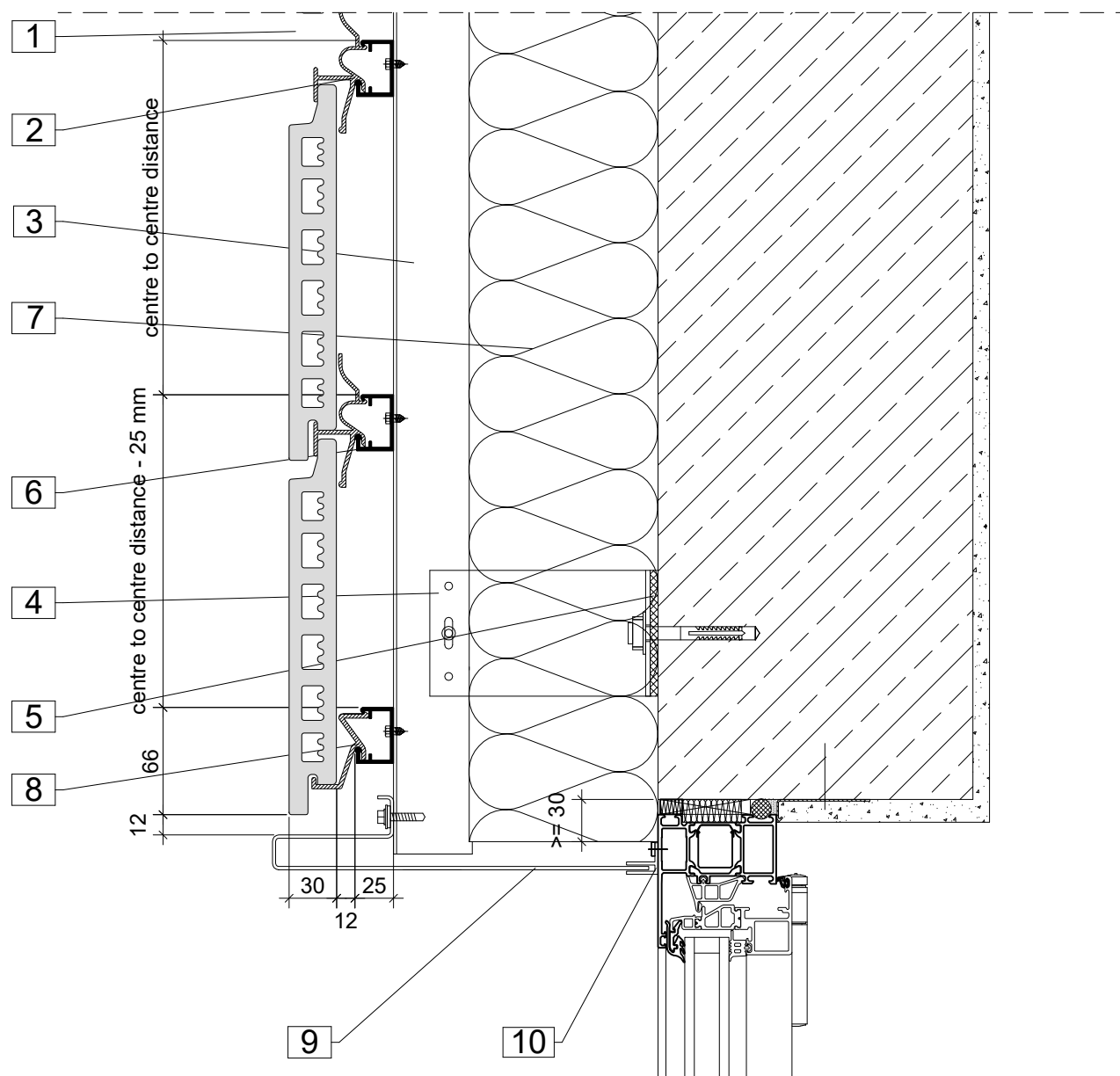


1. Argeton tile plate
2. Middle clamp
3. Aluminium profile, vertical
4. Aluminium cleat
5. Thermal separation

6. Aluminium carrier rail, horizontal
7. Insulation
8. Top clamp
9. Fixing bracket
10. Windowsill

Notes

The details shown are simplified technical suggestions. The planning and realisation of the facade design are carried out building-specifically and in particular cases are to be adapted to the country building codes and guidelines.

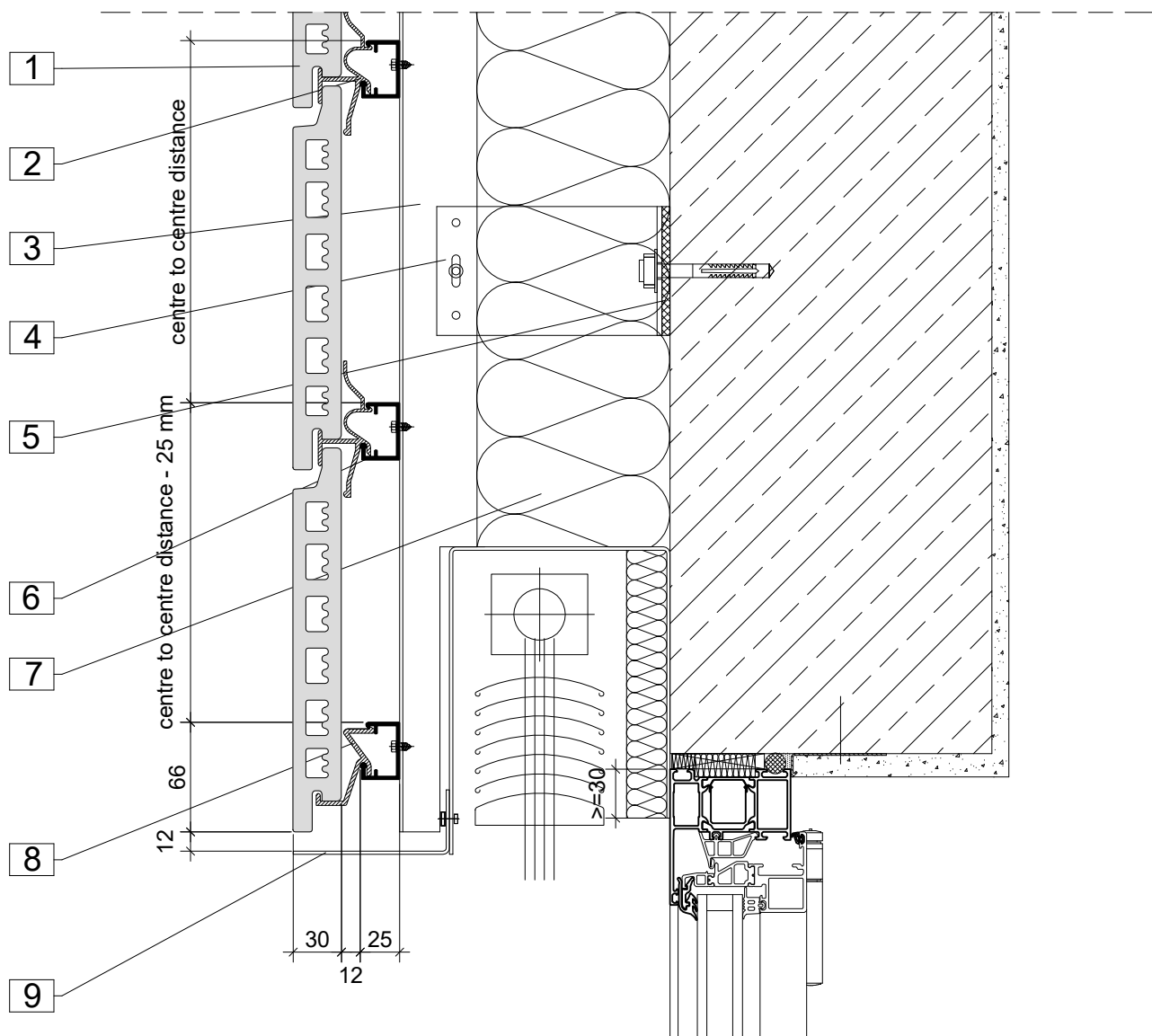


1. Argeton tile plate
2. Middle clamp
3. Aluminium profile, vertical
4. Aluminium cleat
5. Thermal separation

6. Aluminium carrier rail, horizontal
7. Insulation
8. Bottom clamp
9. Sheet, canted
10. F insertion profile

Notes

The details shown are simplified technical suggestions. The planning and realisation of the facade design are carried out building-specifically and in particular cases are to be adapted to the country building codes and guidelines.

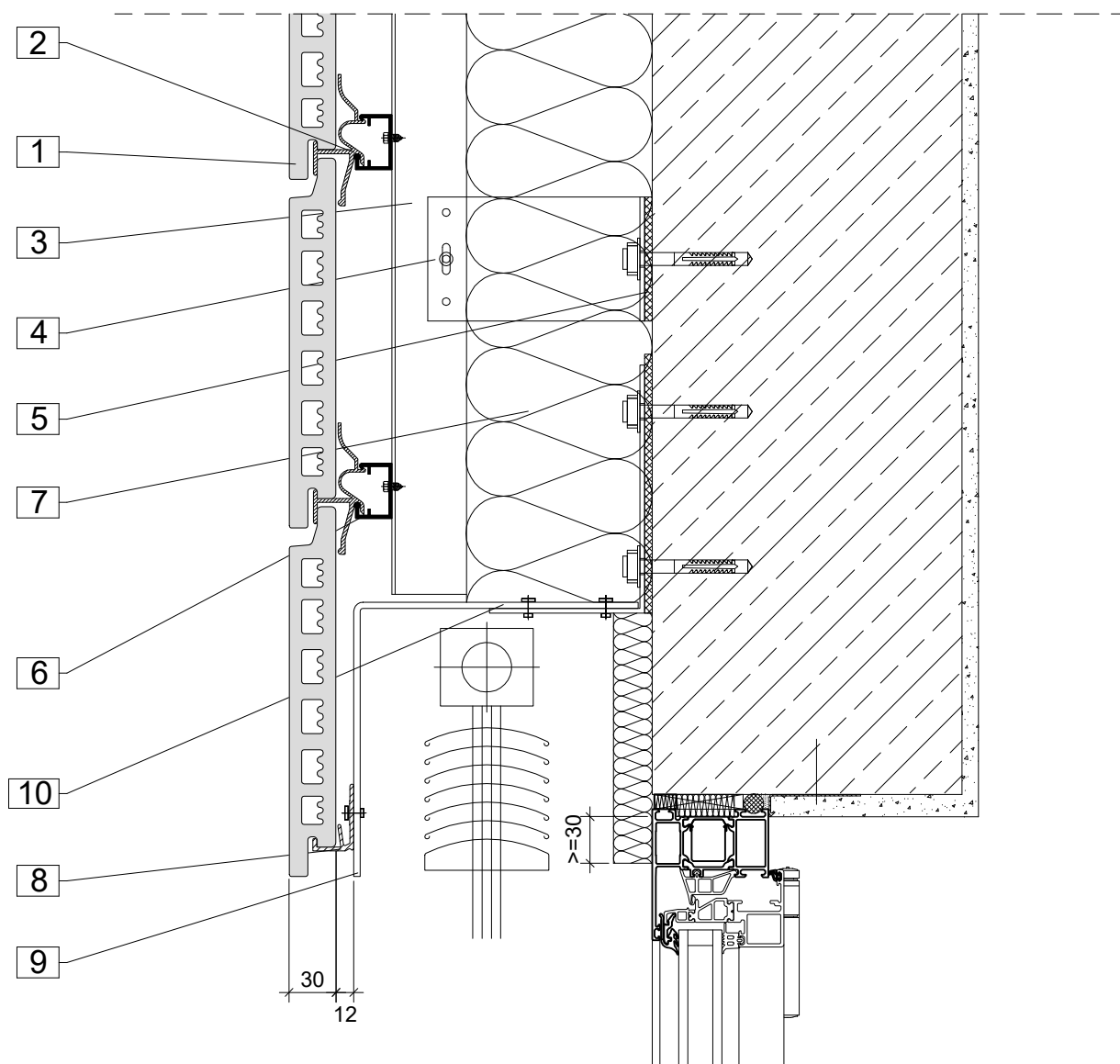


1. Argeton tile plate
2. Middle clamp
3. Aluminium profile, vertical
4. Aluminium cleat
5. Thermal separation

6. Aluminium carrier rail, horizontal
7. Insulation
8. Bottom clamp
9. Sheet, canted

Notes

The details shown are simplified technical suggestions. The planning and realisation of the facade design are carried out building-specifically and in particular cases are to be adapted to the country building codes and guidelines.

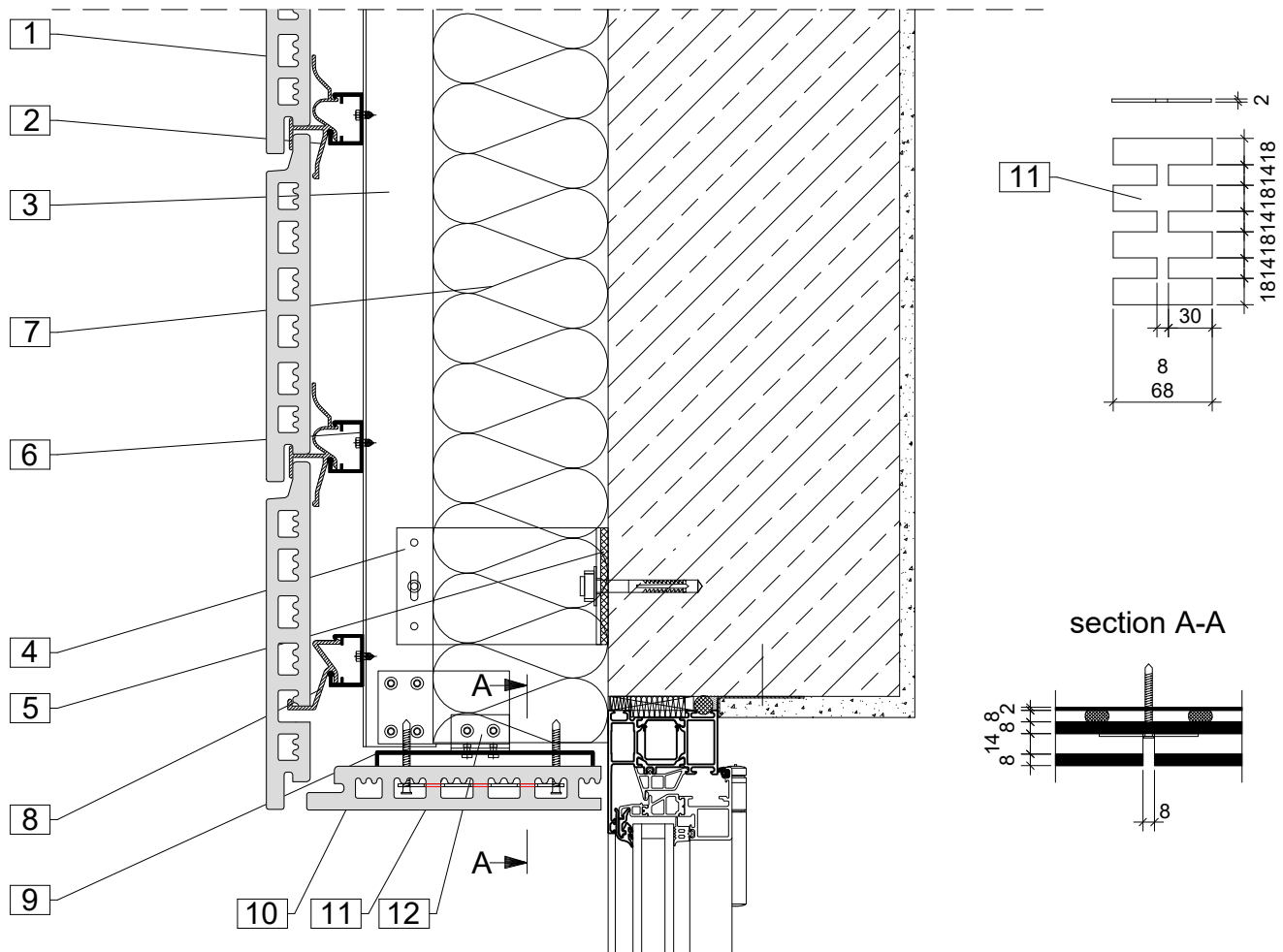


1. Argeton tile plate
2. Middle clamp
3. Aluminium profile, vertical
4. Aluminium cleat
5. Thermal separation

6. Aluminium carrier rail, horizontal
7. Insulation
8. Bottom clamp
9. Sheet, canted
10. Fastening angle

Notes

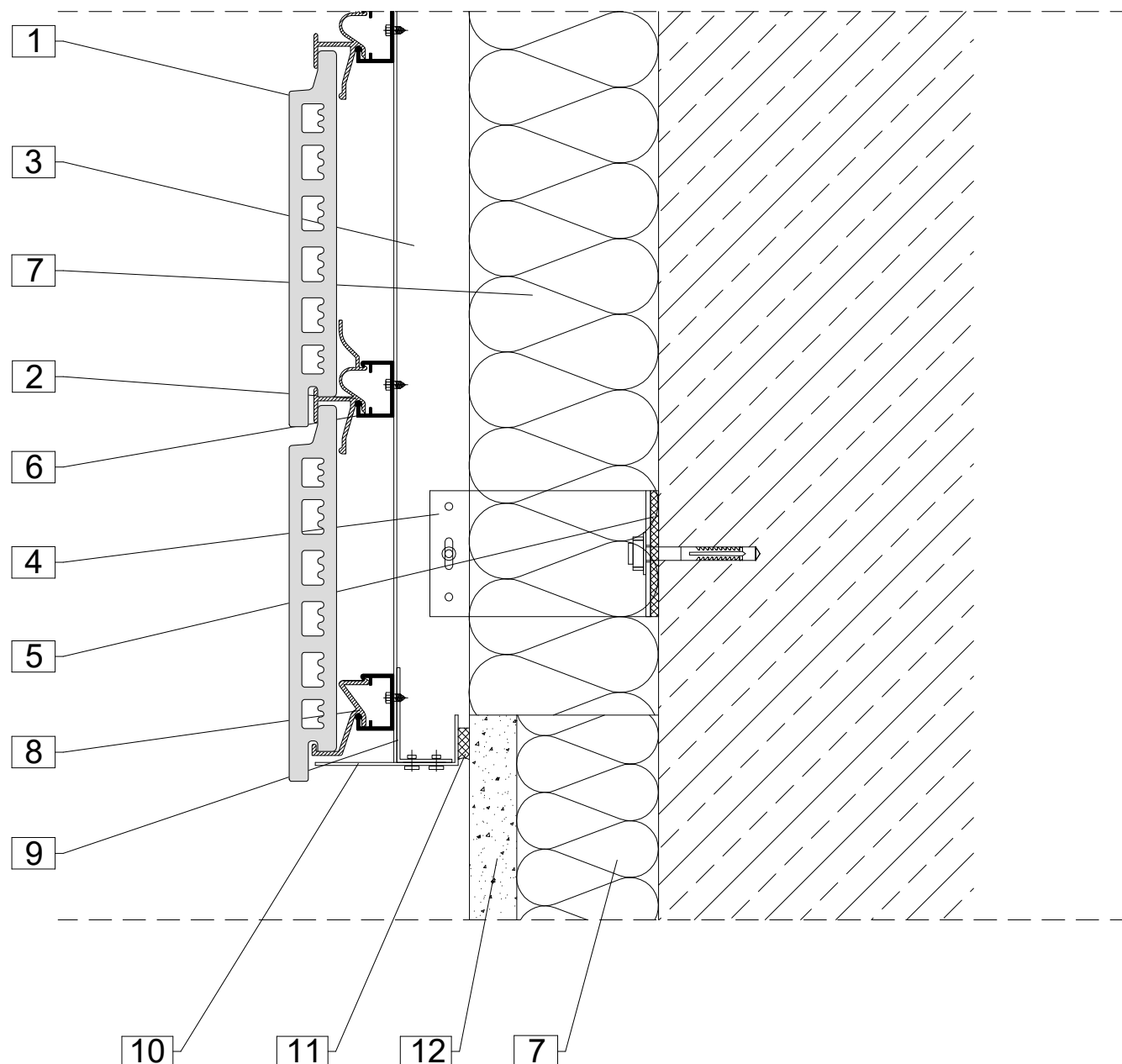
The details shown are simplified technical suggestions. The planning and realisation of the facade design are carried out building-specifically and in particular cases are to be adapted to the country building codes and guidelines.



- | | |
|---------------------------------------|------------------------|
| 1. Argeton tile plate | 7. Insulation |
| 2. Middle clamp | 8. Bottom clamp |
| 3. Aluminium profile, vertical | 9. Sheet, canted |
| 4. Aluminium cleat | 10. Argeton tile plate |
| 5. Thermal separation | 11. Holding plate |
| 6. Aluminium carrier rail, horizontal | 12. Fastening angle |

Notes

The details shown are simplified technical suggestions. The planning and realisation of the facade design are carried out building-specifically and in particular cases are to be adapted to the country building codes and guidelines.

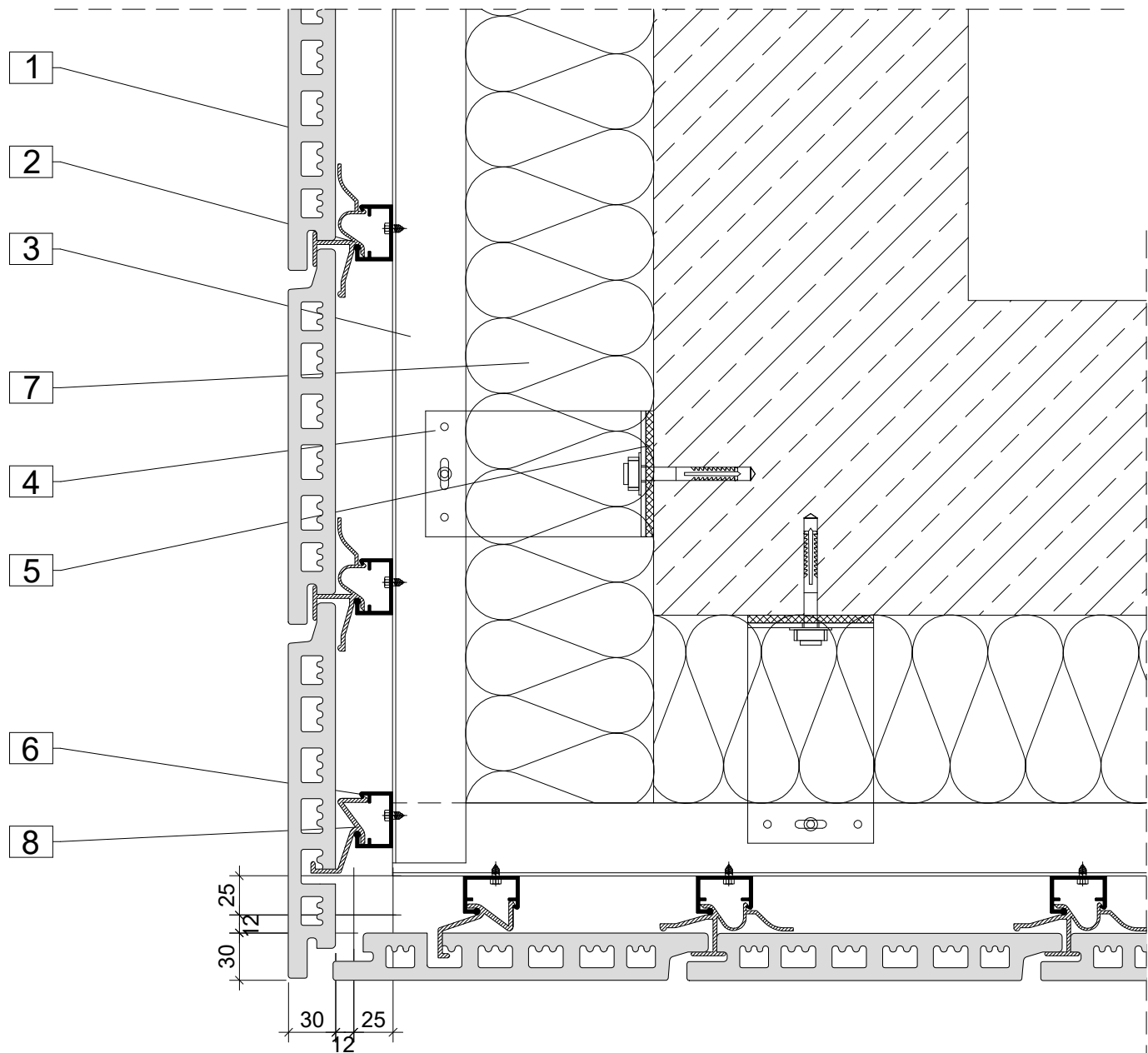


1. Argeton tile plate
2. Middle clamp
3. Aluminium profile, vertical
4. Aluminium cleat
5. Thermal separation
6. Aluminium carrier rail, horizontal

7. Insulation
8. Bottom clamp
9. Fastening angle
10. Sheet, canted
11. Sealing tape
12. Plaster

Notes

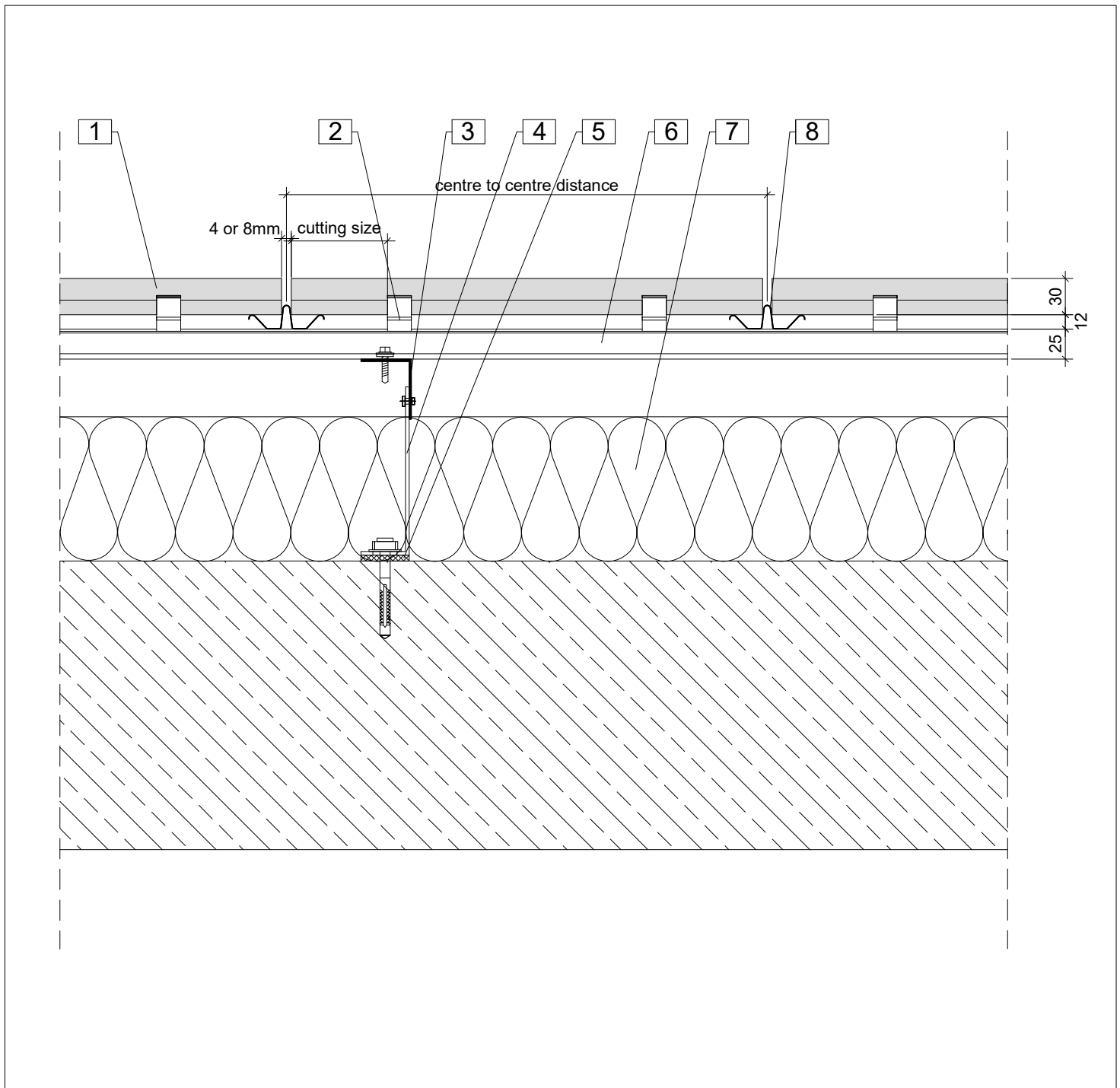
The details shown are simplified technical suggestions. The planning and realisation of the facade design are carried out building-specifically and in particular cases are to be adapted to the country building codes and guidelines.



1. Argeton tile plate
2. Middle clamp
3. Aluminium profile, vertical
4. Aluminium cleat
5. Thermal separation
6. Aluminium carrier rail, horizontal
7. Insulation
8. Bottom clamp

Notes

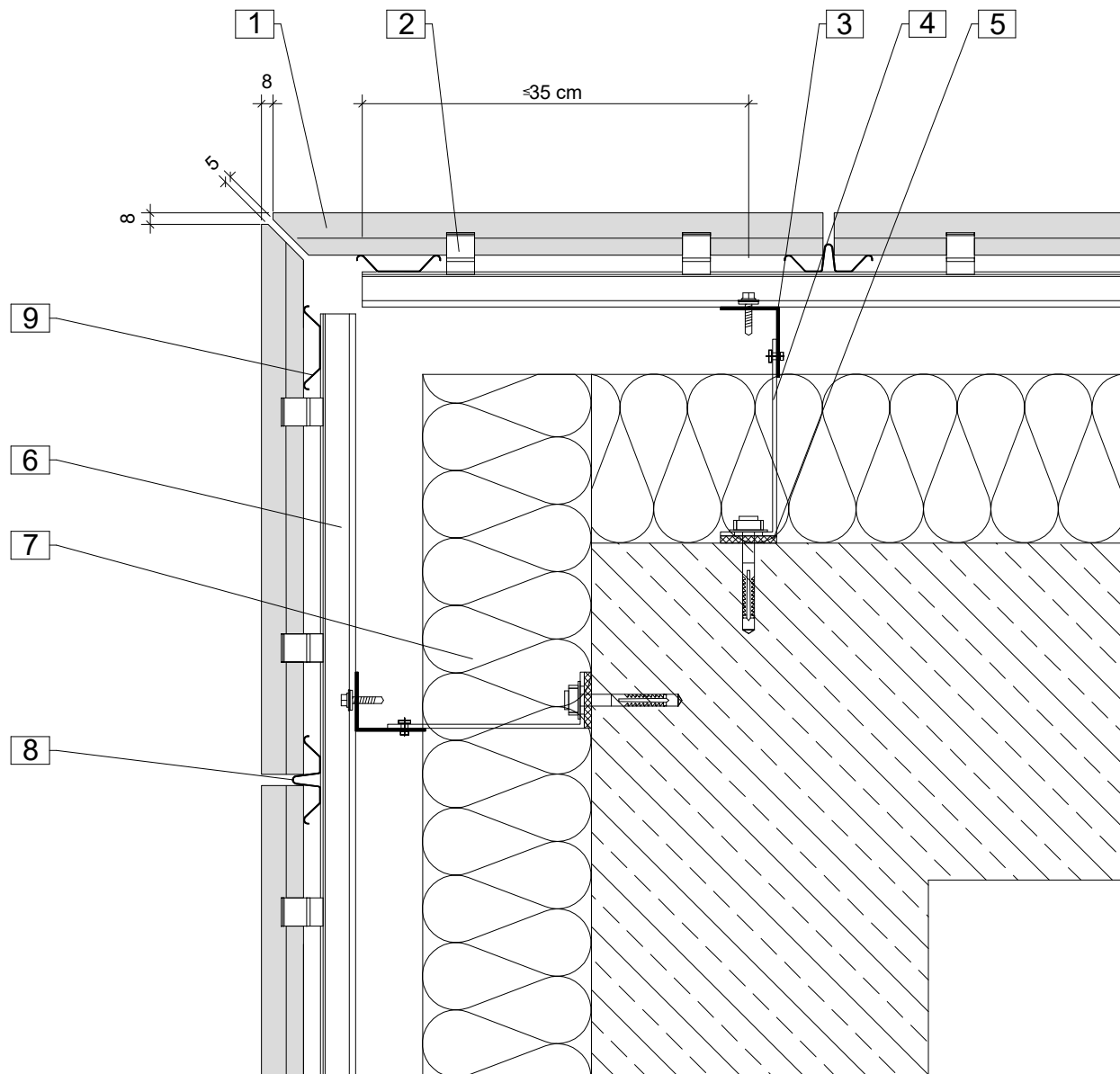
The details shown are simplified technical suggestions. The planning and realisation of the facade design are carried out building-specifically and in particular cases are to be adapted to the country building codes and guidelines.



- | | |
|--------------------------------|---------------------------------------|
| 1. Argeton tile plate | 6. Aluminium carrier rail, horizontal |
| 2. Clamp | 7. Insulation |
| 3. Aluminium profile, vertical | 8. Junction profile |
| 4. Aluminium cleat | |
| 5. Thermal separation | |

Notes

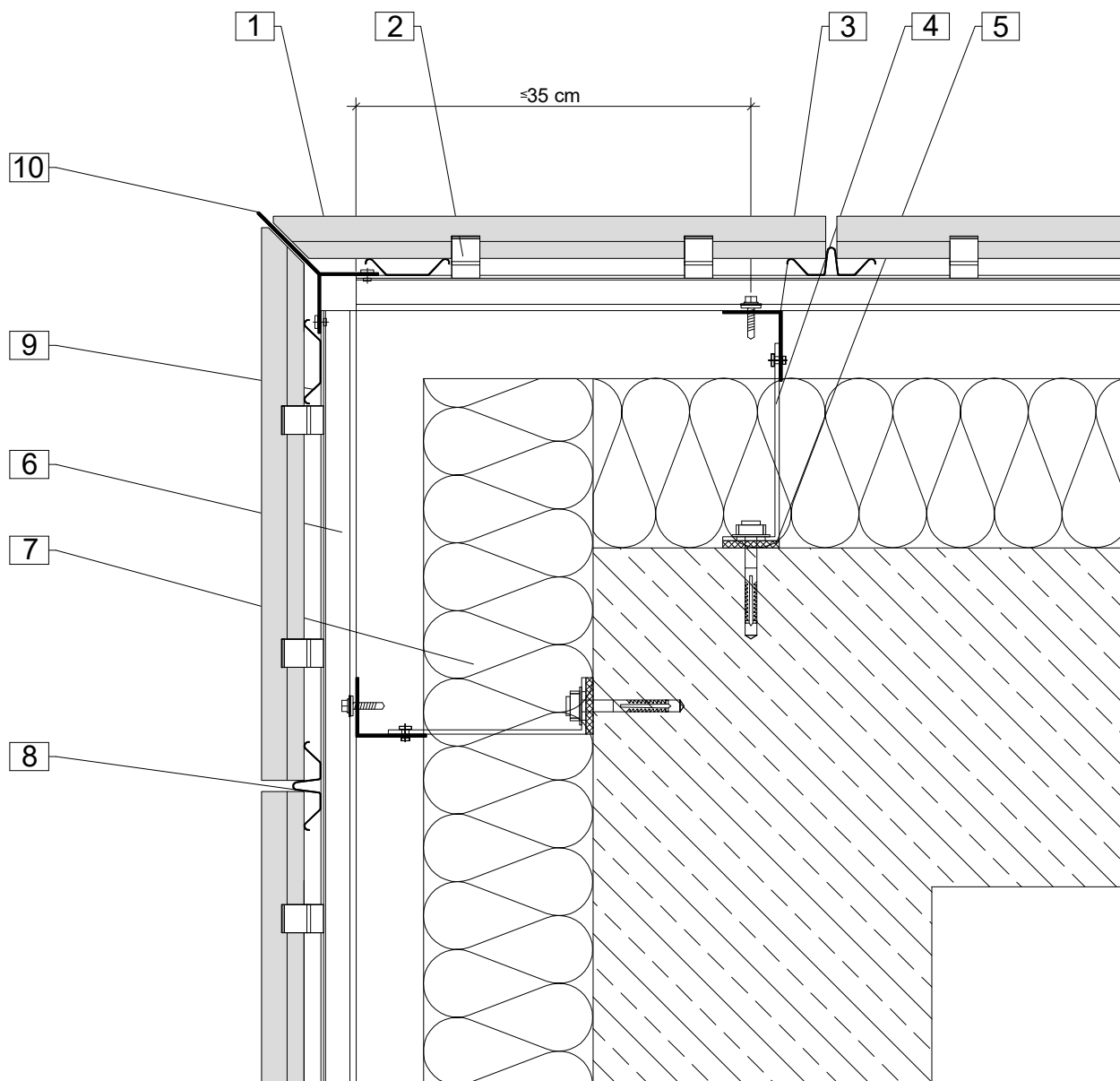
The details shown are simplified technical suggestions. The planning and realisation of the facade design are carried out building-specifically and in particular cases are to be adapted to the country building codes and guidelines.



- | | |
|--------------------------------|---------------------------------------|
| 1. Argeton tile plate | 6. Aluminium carrier rail, horizontal |
| 2. Clamp | 7. Insulation |
| 3. Aluminium profile, vertical | 8. Junction profile |
| 4. Aluminium cleat | 9. Spring profile |
| 5. Thermal separation | |

Notes

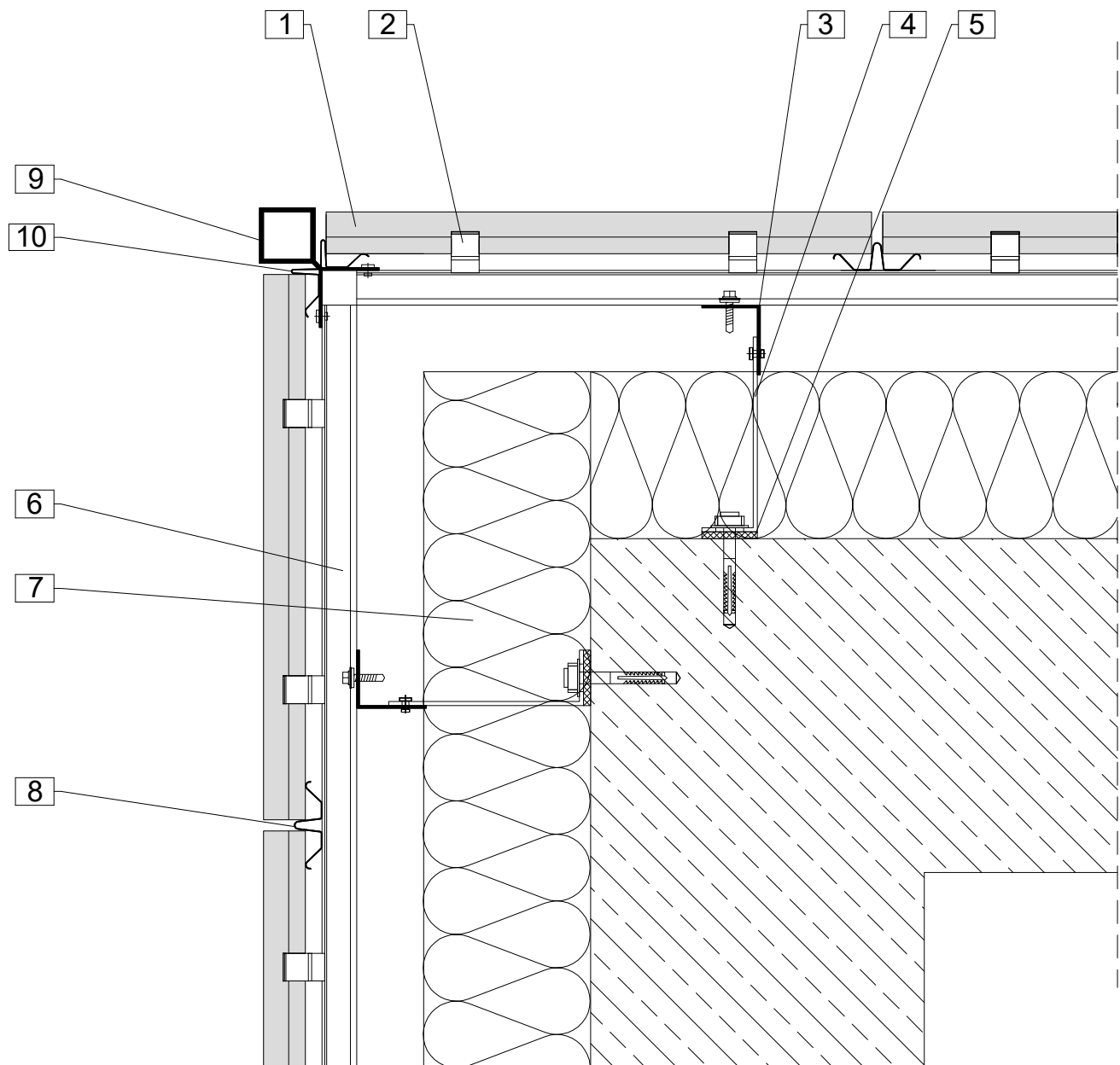
The details shown are simplified technical suggestions. The planning and realisation of the facade design are carried out building-specifically and in particular cases are to be adapted to the country building codes and guidelines.



- | | |
|--------------------------------|---------------------------------------|
| 1. Argeton tile plate | 6. Aluminium carrier rail, horizontal |
| 2. Clamp | 7. Insulation |
| 3. Aluminium profile, vertical | 8. Junction profile |
| 4. Aluminium cleat | 9. Spring Profile |
| 5. Thermal separation | 10. Corner profile |

Notes

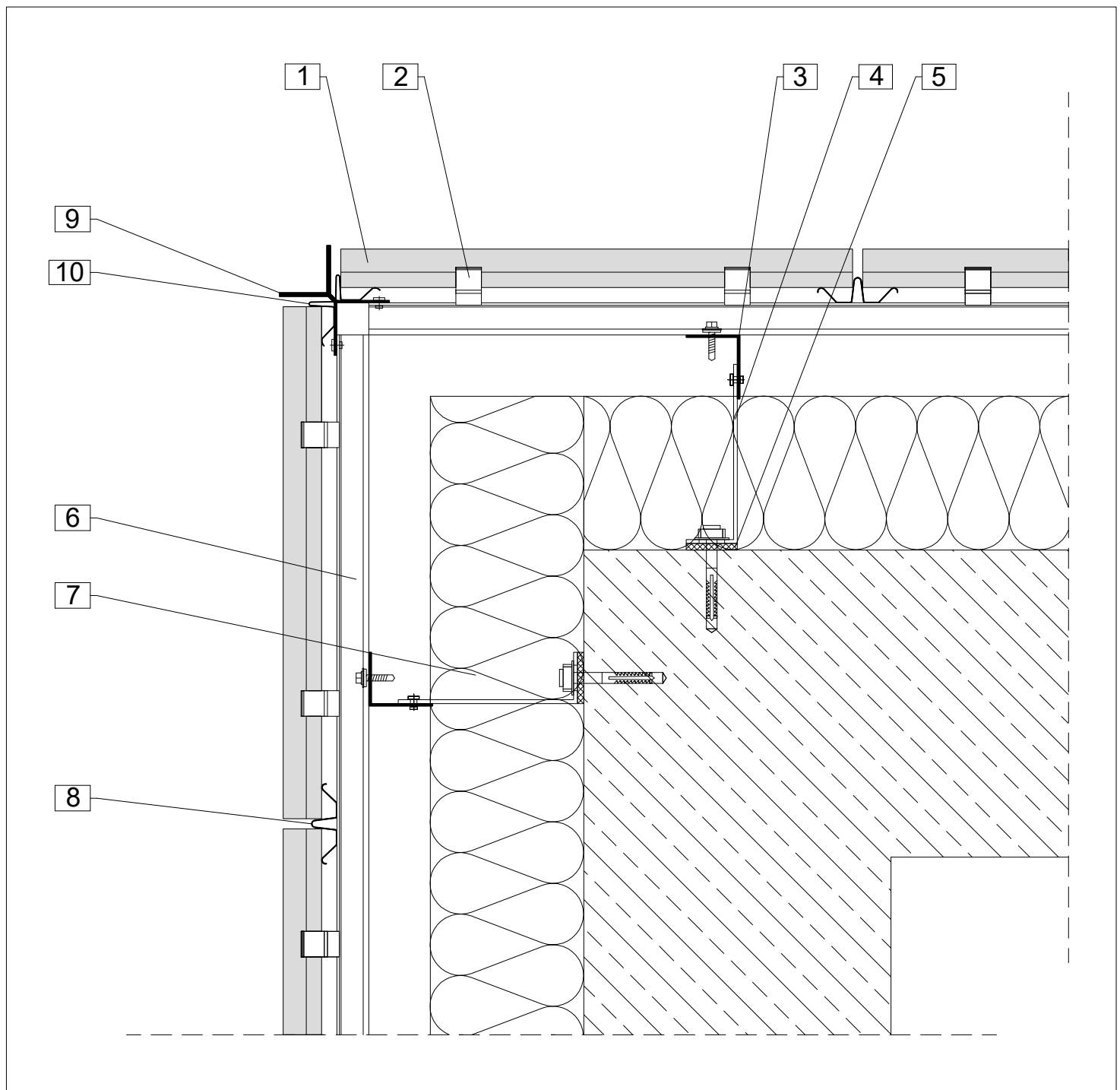
The details shown are simplified technical suggestions. The planning and realisation of the facade design are carried out building-specifically and in particular cases are to be adapted to the country building codes and guidelines.



- | | |
|--------------------------------|---------------------------------------|
| 1. Argeton tile plate | 6. Aluminium carrier rail, horizontal |
| 2. Clamp | 7. Insulation |
| 3. Aluminium profile, vertical | 8. Junction profile |
| 4. Aluminium cleat | 9. Corner profile |
| 5. Thermal separation | 10. Drainage abutment profile |

Notes

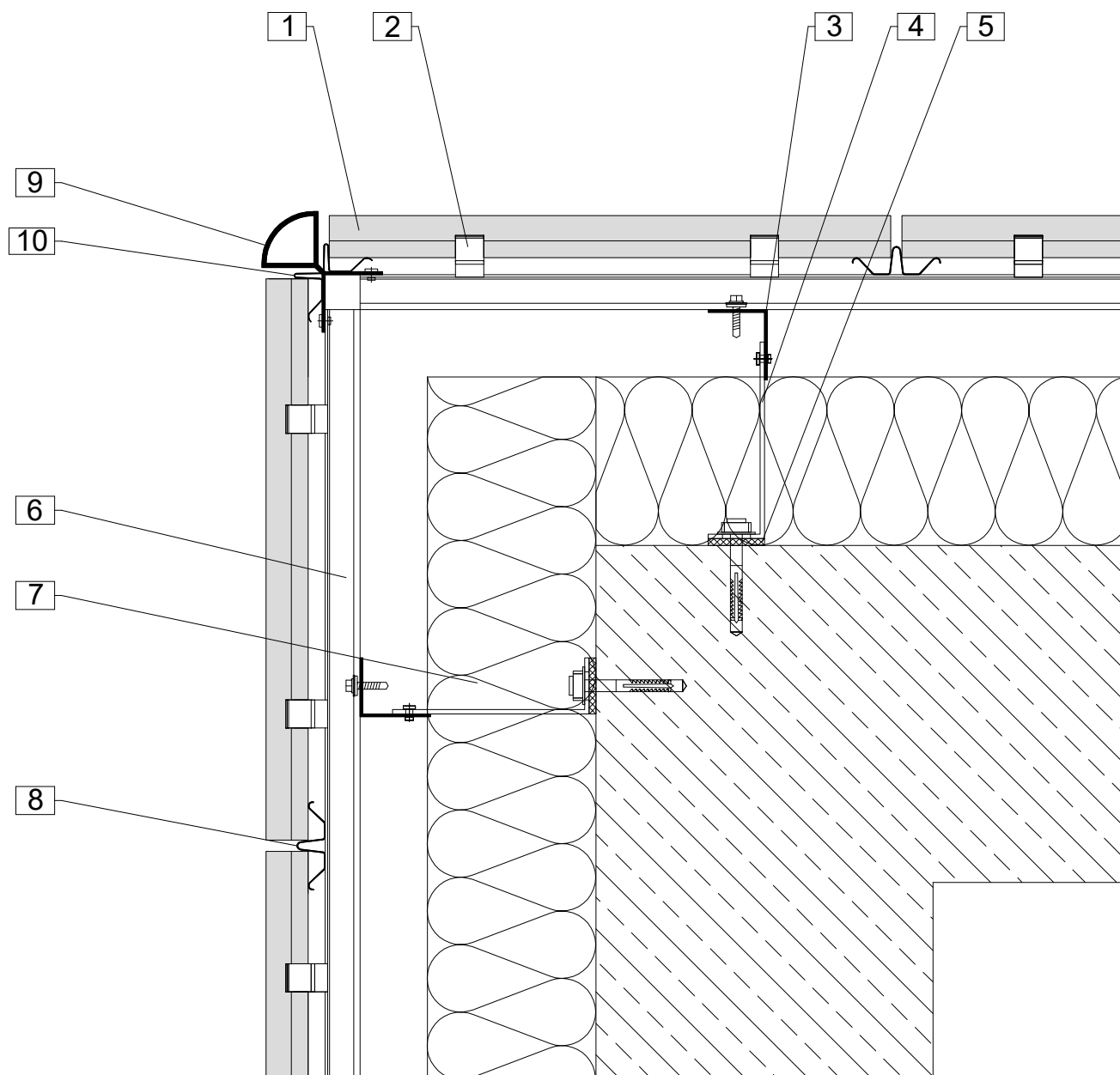
The details shown are simplified technical suggestions. The planning and realisation of the facade design are carried out building-specifically and in particular cases are to be adapted to the country building codes and guidelines.



- | | |
|--------------------------------|---------------------------------------|
| 1. Argeton tile plate | 6. Aluminium carrier rail, horizontal |
| 2. Clamp | 7. Insulation |
| 3. Aluminium profile, vertical | 8. Junction profile |
| 4. Aluminium cleat | 9. Corner profile |
| 5. Thermal separation | 10. Drainage abutment profile |

Notes

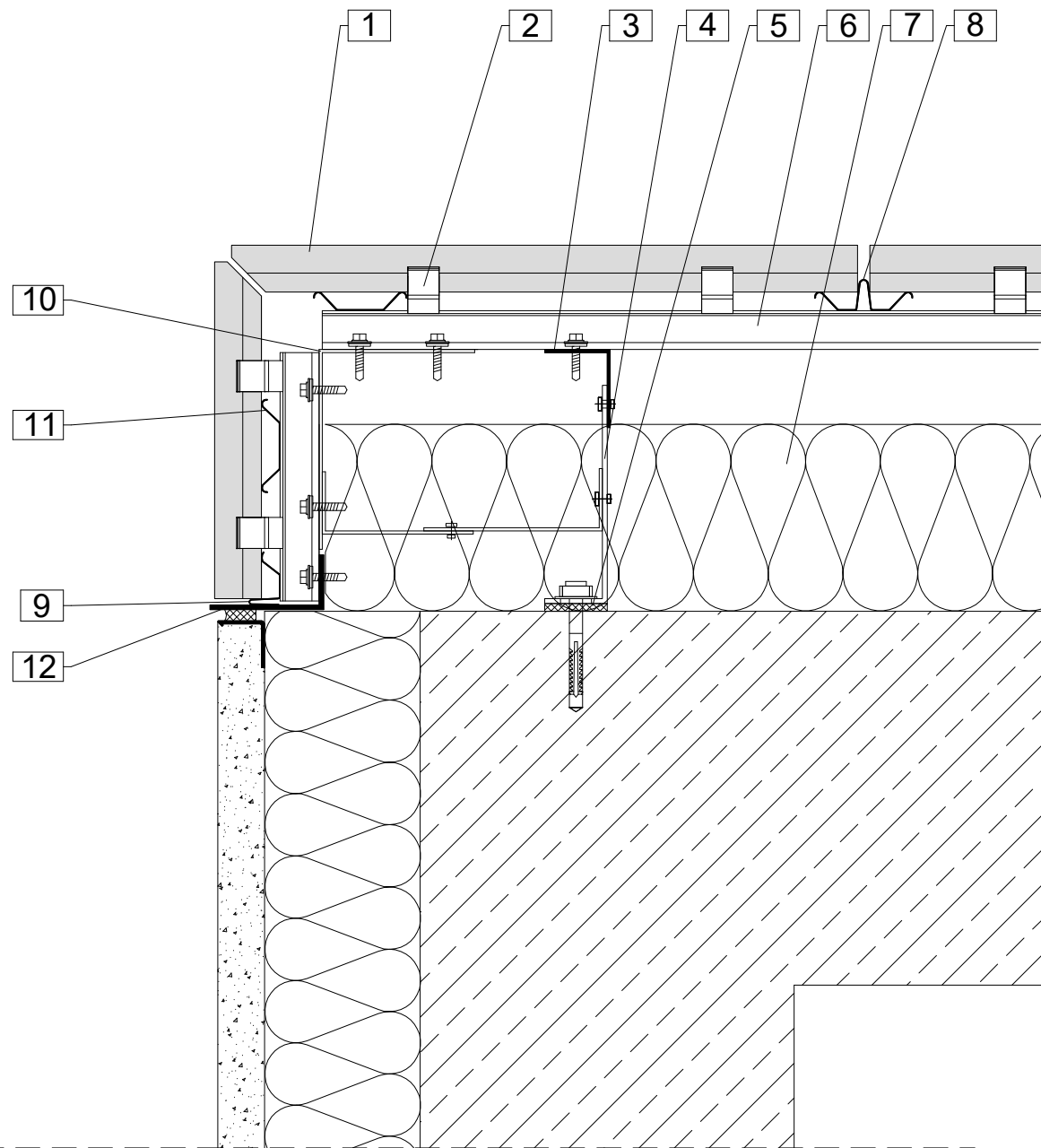
The details shown are simplified technical suggestions. The planning and realisation of the facade design are carried out building-specifically and in particular cases are to be adapted to the country building codes and guidelines.



- | | |
|--------------------------------|---------------------------------------|
| 1. Argeton tile plate | 6. Aluminium carrier rail, horizontal |
| 2. Clamp | 7. Insulation |
| 3. Aluminium profile, vertical | 8. Junction profile |
| 4. Aluminium cleat | 9. Corner profile |
| 5. Thermal separation | 10. Drainage abutment profile |

Notes

The details shown are simplified technical suggestions. The planning and realisation of the facade design are carried out building-specifically and in particular cases are to be adapted to the country building codes and guidelines.

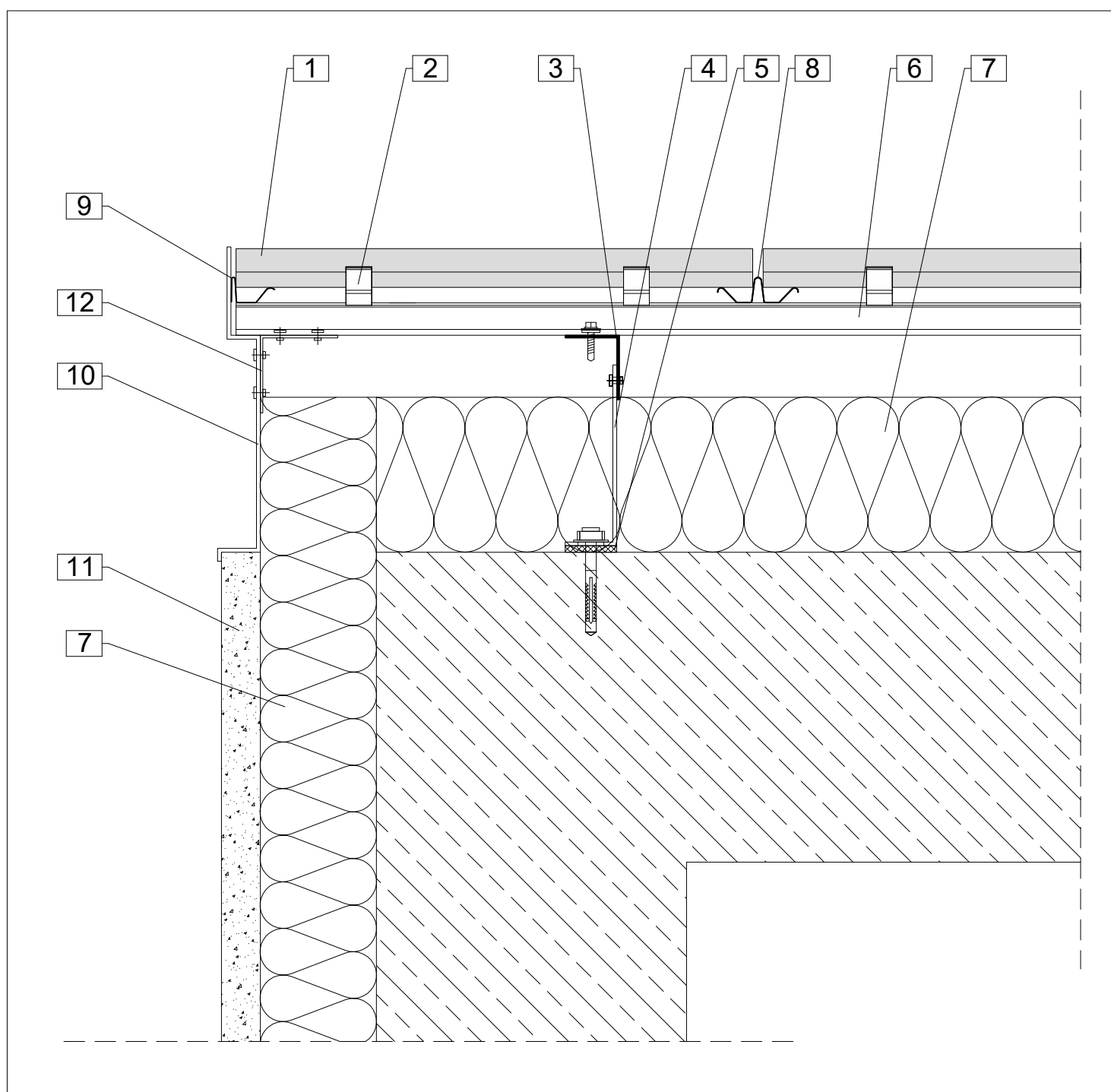


1. Argeton tile plate
2. Clamp
3. Aluminium profile, vertical
4. Aluminium cleat
5. Thermal separation
6. Aluminium carrier rail, horizontal

7. Insulation
8. Junction profile
9. Drainage abutment profile
10. Fastening angle
11. Spring profile
12. Sheet, canted

Notes

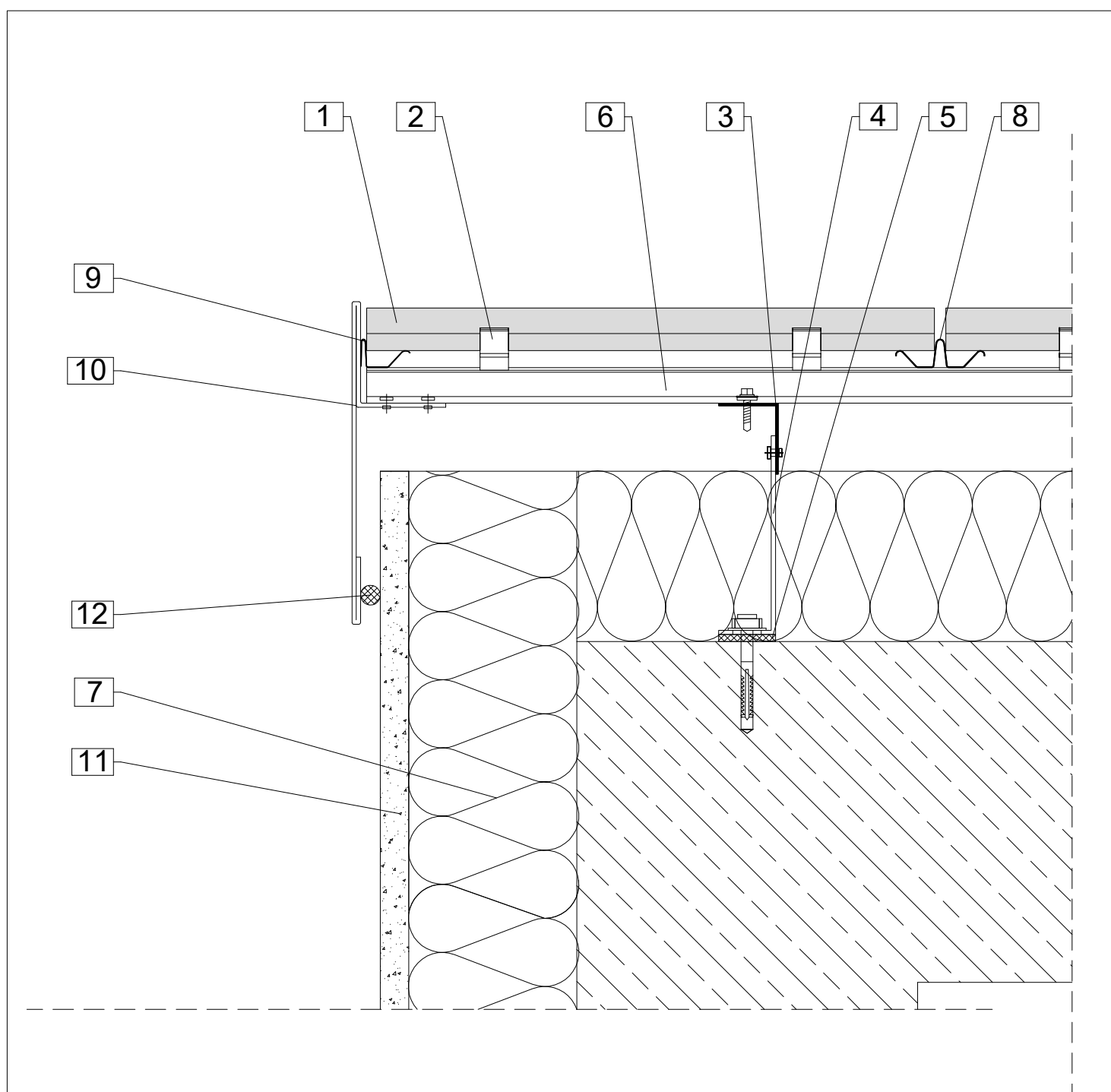
The details shown are simplified technical suggestions. The planning and realisation of the facade design are carried out building-specifically and in particular cases are to be adapted to the country building codes and guidelines.



- | | |
|---------------------------------------|------------------------------|
| 1. Argeton tile plate | 7. Insulation |
| 2. Clamp | 8. Junction profile |
| 3. Aluminium profile, vertical | 9. Drainage abutment profile |
| 4. Aluminium cleat | 10. Sheet, canted |
| 5. Thermal separation | 11. Plaster |
| 6. Aluminium carrier rail, horizontal | 12. Fastening angle |

Notes

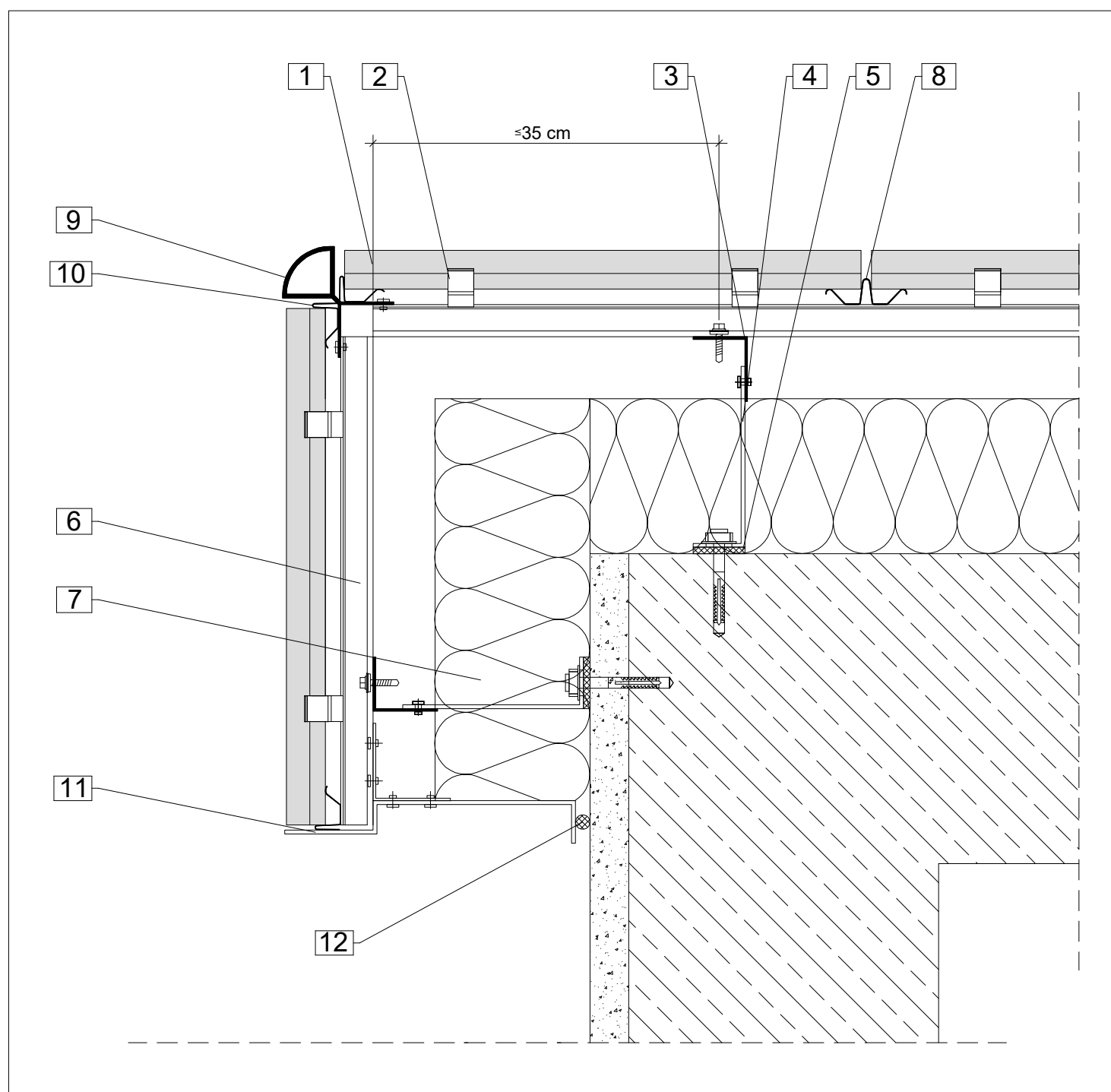
The details shown are simplified technical suggestions. The planning and realisation of the facade design are carried out building-specifically and in particular cases are to be adapted to the country building codes and guidelines.



- | | |
|---------------------------------------|------------------------------|
| 1. Argeton tile plate | 7. Insulation |
| 2. Clamp | 8. Junction profile |
| 3. Aluminium profile, vertical | 9. Drainage abutment profile |
| 4. Aluminium cleat | 10. Sheet, canted |
| 5. Thermal separation | 11. Plaster |
| 6. Aluminium carrier rail, horizontal | 12. Sealing tape |

Notes

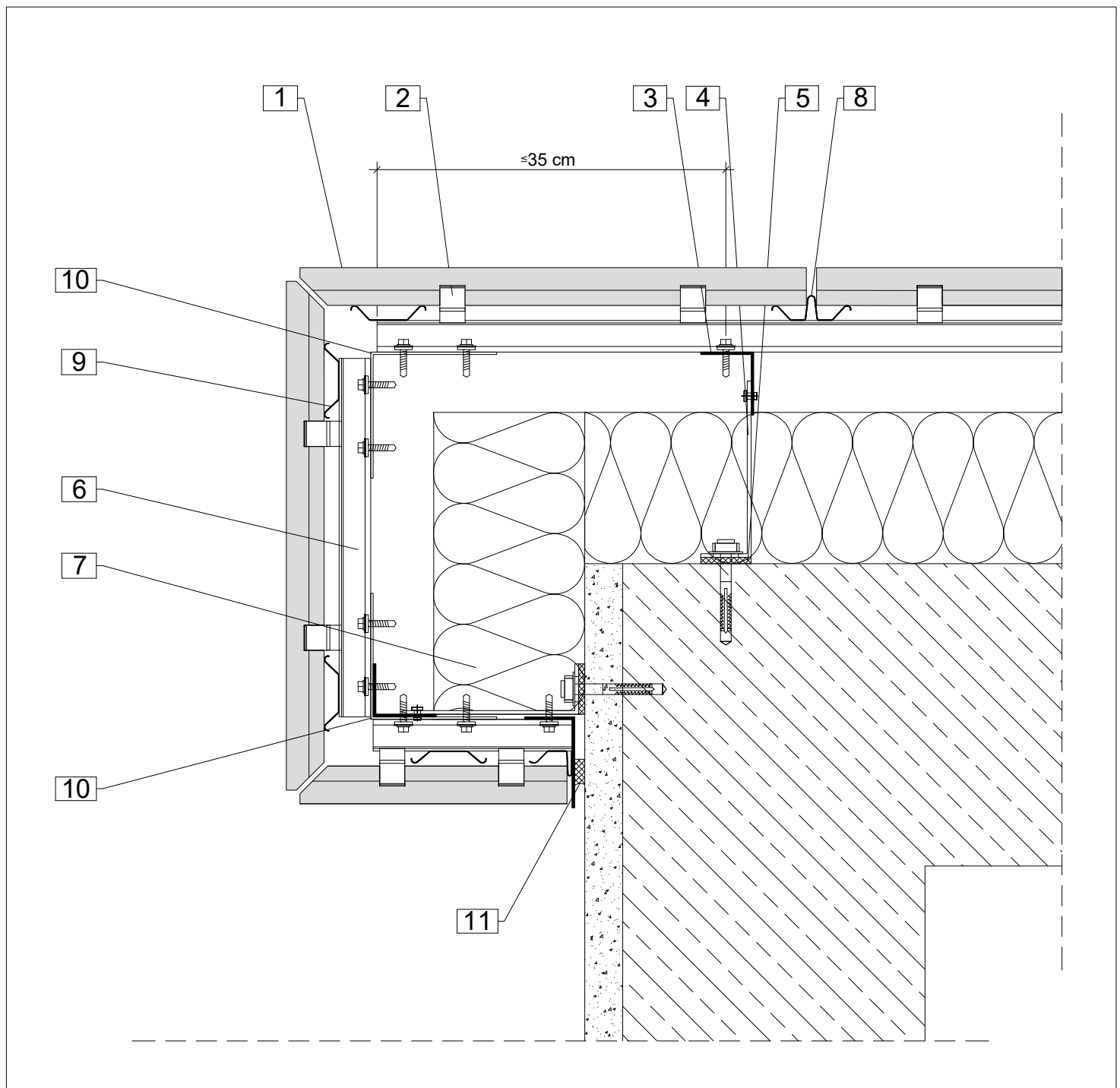
The details shown are simplified technical suggestions. The planning and realisation of the facade design are carried out building-specifically and in particular cases are to be adapted to the country building codes and guidelines.



- | | |
|---------------------------------------|-------------------------------|
| 1. Argeton tile plate | 7. Insulation |
| 2. Clamp | 8. Junction profile |
| 3. Aluminium profile, vertical | 9. Corner profile |
| 4. Aluminium cleat | 10. Drainage abutment profile |
| 5. Thermal separation | 11. Sheet, canted |
| 6. Aluminium carrier rail, horizontal | 12. Sealing tape |

Notes

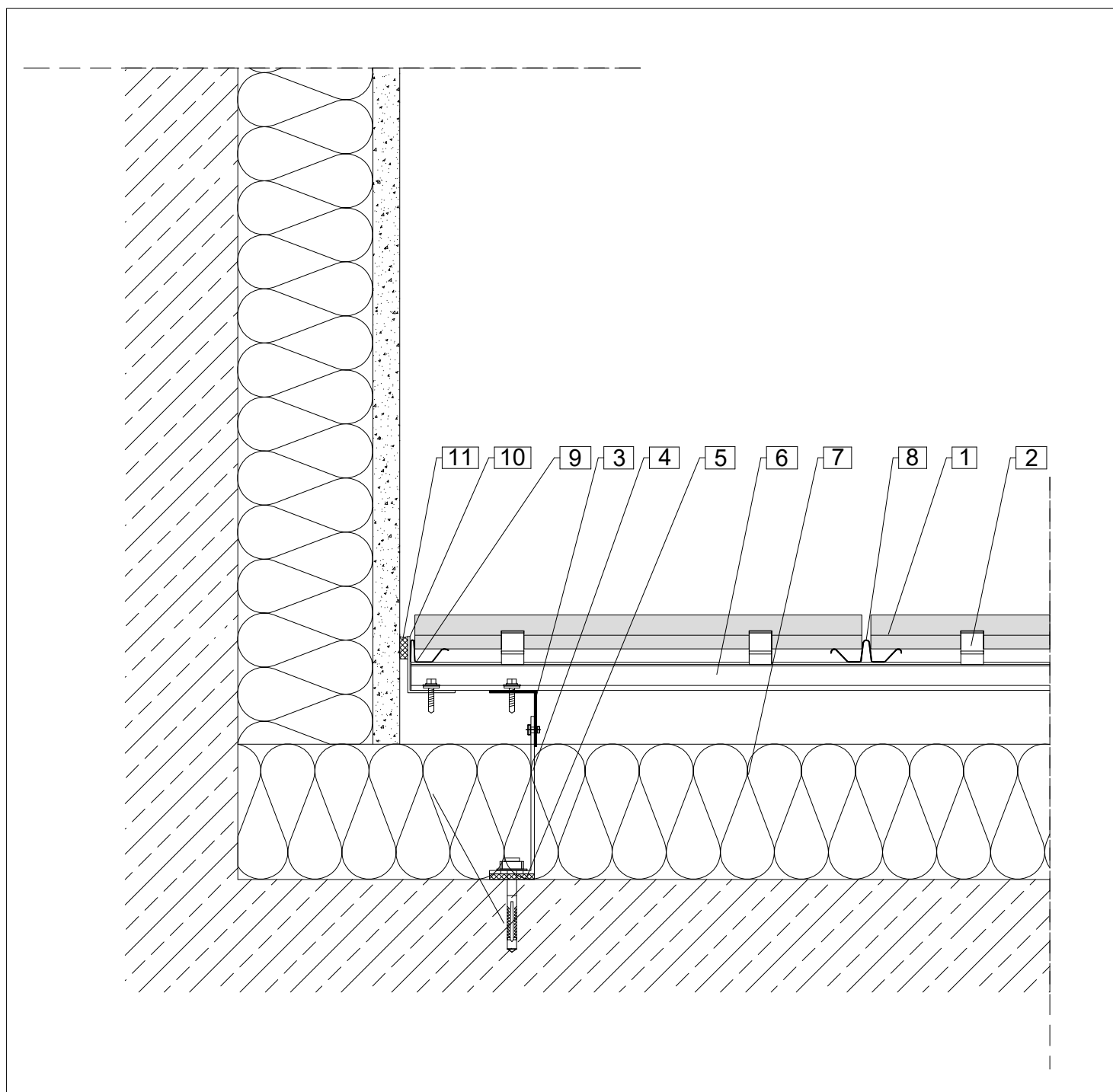
The details shown are simplified technical suggestions. The planning and realisation of the facade design are carried out building-specifically and in particular cases are to be adapted to the country building codes and guidelines.



- | | |
|--------------------------------|---------------------------------------|
| 1. Argeton tile plate | 6. Aluminium carrier rail, horizontal |
| 2. Clamp | 7. Insulation |
| 3. Aluminium profile, vertical | 8. Junction profile |
| 4. Aluminium cleat | 9. Spring profile |
| 5. Thermal separation | 10. Fastening angle |
| | 11. Sealing tape |

Notes

The details shown are simplified technical suggestions. The planning and realisation of the facade design are carried out building-specifically and in particular cases are to be adapted to the country building codes and guidelines.

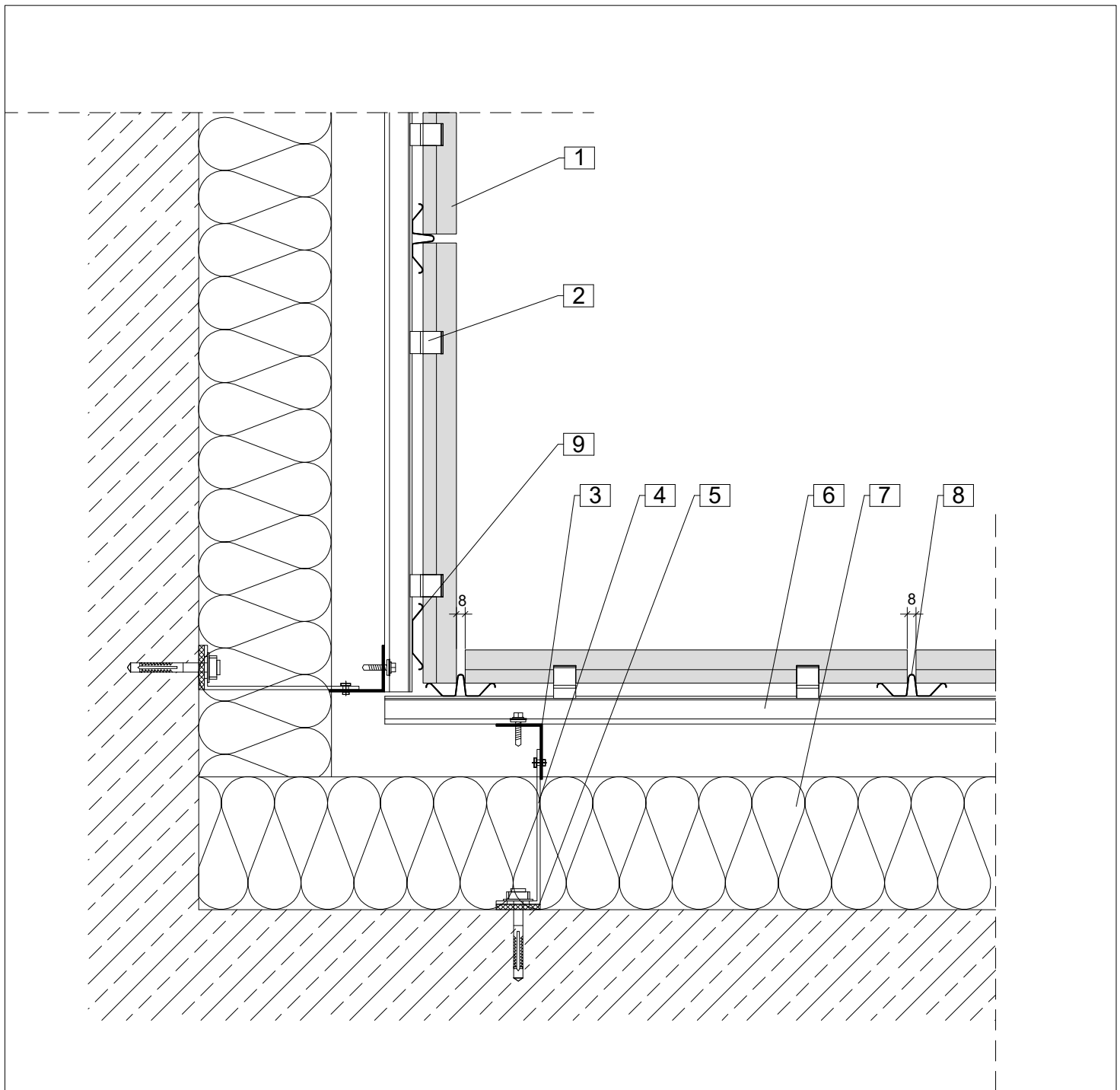


1. Argeton tile plate
2. Clamp
3. Aluminium profile, vertical
4. Aluminium cleat
5. Thermal separation

6. Aluminium carrier rail, horizontal
7. Insulation
8. Junction profile
9. Drainage abutment profile
10. Sealing tape

Notes

The details shown are simplified technical suggestions. The planning and realisation of the facade design are carried out building-specifically and in particular cases are to be adapted to the country building codes and guidelines.

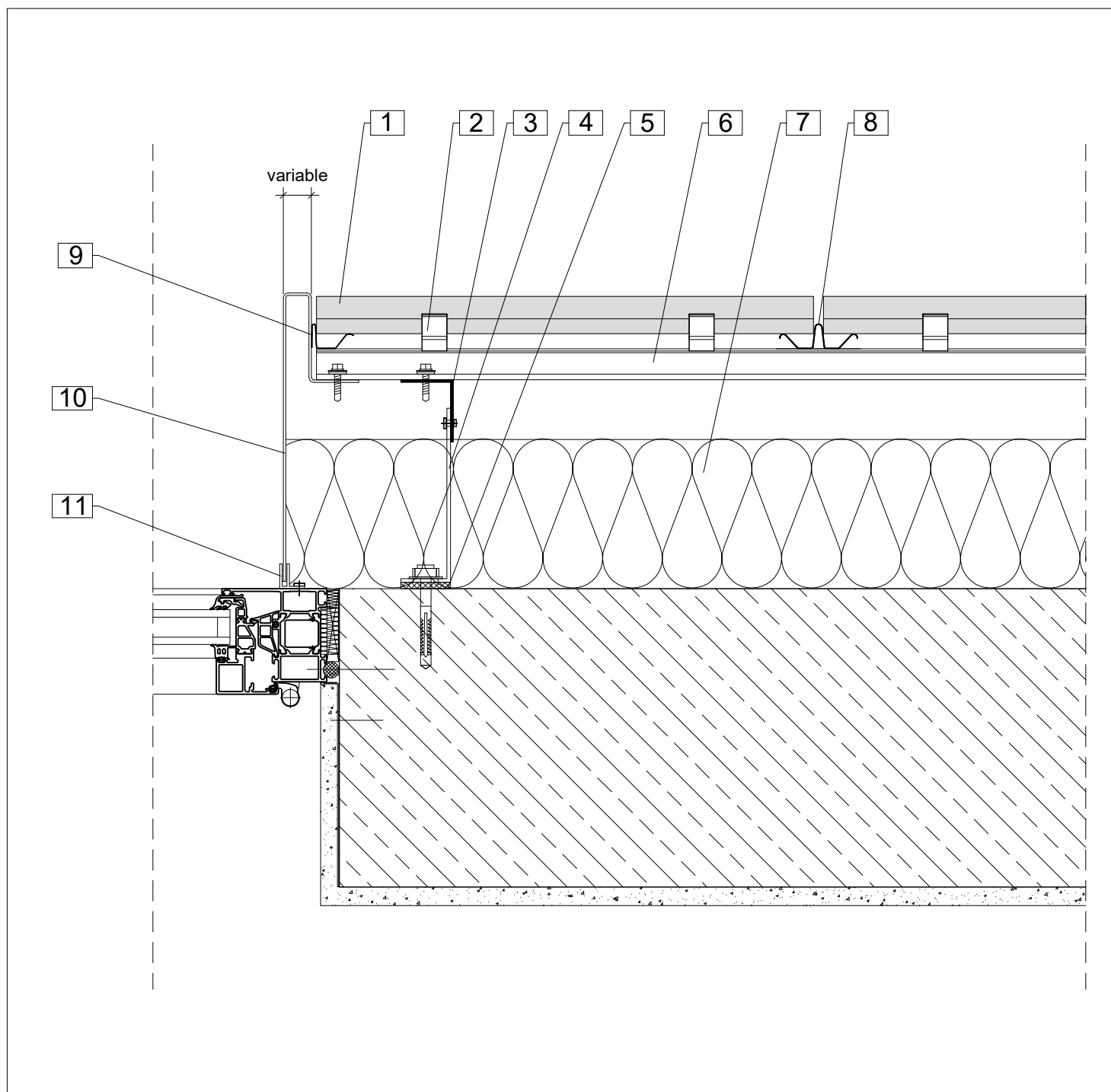


1. Argeton tile plate
2. Clamp
3. Aluminium profile, vertical
4. Aluminium cleat
5. Thermal separation

6. Aluminium carrier rail, horizontal
7. Insulation
8. Junction profile
9. Spring profile

Notes

The details shown are simplified technical suggestions. The planning and realisation of the facade design are carried out building-specifically and in particular cases are to be adapted to the country building codes and guidelines.

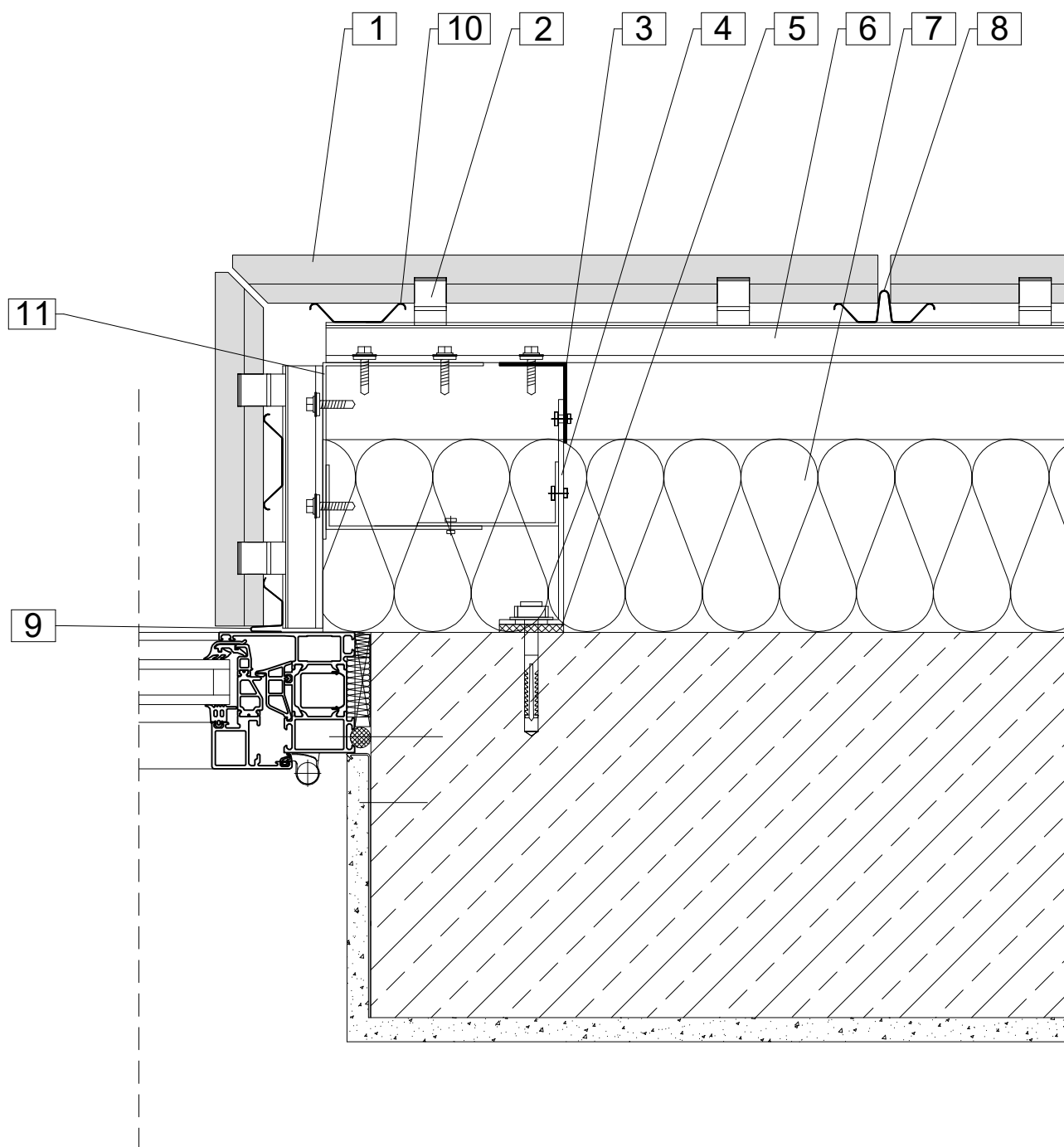


1. Argeton tile plate
2. Clamp
3. Aluminium profile, vertical
4. Aluminium cleat
5. Thermal separation
6. Aluminium carrier rail, horizontal

7. Insulation
8. Junction profile
9. Drainage abutment profile
10. Reveal sheet, canted
11. F insertion profile

Notes

The details shown are simplified technical suggestions. The planning and realisation of the facade design are carried out building-specifically and in particular cases are to be adapted to the country building codes and guidelines.



1. Argeton tile plate
2. Clamp
3. Aluminium profile, vertical
4. Aluminium cleat
5. Thermal separation
6. Aluminium carrier rail, horizontal

7. Insulation
8. Junction profile
9. Drainage abutment profile
10. Spring profile
11. Fastening angle

Notes

The details shown are simplified technical suggestions. The planning and realisation of the facade design are carried out building-specifically and in particular cases are to be adapted to the country building codes and guidelines.